

CTCF(K344E)

CTCF(K344E)

货号: 26324

基因符号: CTCF; MRD21

描述: CTCF(K344E) 小鼠单克隆抗体

背景: Transcriptional repressor CTCF also known as 11-zinc finger protein or CCCTC-binding factor is a transcription factor that in humans is encoded by the CTCF gene. CTCF is involved in many cellular processes, including transcriptional regulation, insulator activity, recombination and regulation of chromatin architecture.

免疫原: A synthetic peptide from the internal region of CTCF which includes the mutation of K344E, human origin.

经过测试的应用: ELISA, WB, IHC

推荐稀释度:

ELISA: 1:1000-1:5000

WB: 1:500-1:1000

IHC: 1:50-1:100

浓度: 1 mg/ml

种属反应性: Mouse

形式: Liquid

克隆性: Monoclonal

亚型: IgG

纯化:: Purified from ascites

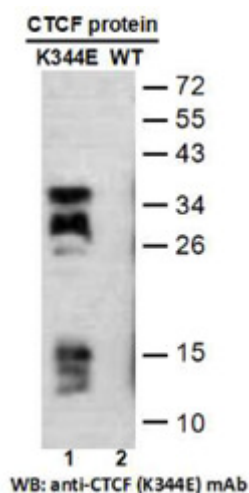
Preservative: No

成分: PBS (without Mg^{2+} and Ca^{2+}), pH 7.4, 150 mM NaCl, 50% glycerol

种属反应性: Recognizes K344E mutant, but not wild type CTCF of vertebrates.

储存条件:: Store at $-20^{\circ}C$. Avoid repeated freezing and thawing

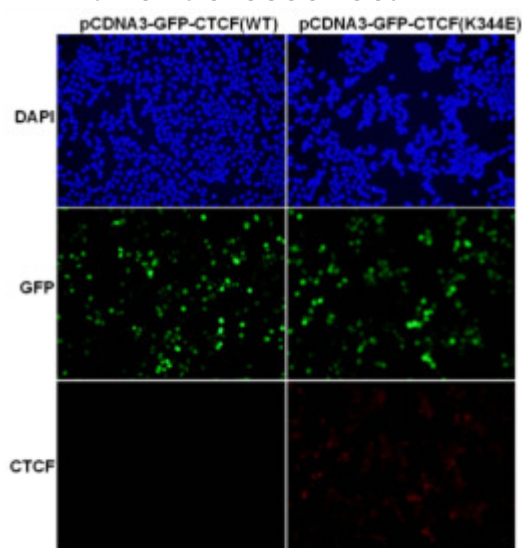
Western blot:



Western blot analysis of recombinant CTCF (K344E) and wild type proteins.

Purified His-tagged CTCF (K344E) protein (lane 1) and corresponding wild type protein (lane 2) were blotted with CTCF(K344E) monoclonal antibody (货号26324).

Immunofluorescence:



Immunofluorescence of cells expressing CTCF proteins with CTCF(K344E) antibody.

HEK293T cells were transfected with pCDNA3-GFP-CTCF (WT) plasmid (left column) or pCDNA3-GFP-CTCF (K344E) plasmid (right column), then fixed and stained with CTCF(K344E) monoclonal antibody (货号26324).