

## CSPG4 (DMC466) IGG1 CHIMERIC MAB

**Cat.#:** 28242

**Product Name:** Anti-CSPG4(DMC466) IgG1 Chimeric Monoclonal Antibody

**Synonyms:** CSPG4A; HMW-MAA; MCSP; MCSPG; MEL-CSPG; MSK16; NG2

**Description:** Anti-CSPG4 antibody(DMC466) IgG1 Chimeric Monoclonal Antibody

**Background:** A human melanoma-associated chondroitin sulfate proteoglycan plays a role in stabilizing cell-substratum interactions during early events of melanoma cell spreading on endothelial basement membranes. CSPG4 represents an integral membrane chondroitin sulfate proteoglycan expressed by human malignant melanoma cells. [provided by RefSeq; Jul 2008]

**Applications:** Flow Cyt

**Recommended Dilutions:** Flow Cyt 1:100

**Host Species:** Rabbit

**Isotype:** Rabbit:Human Fc chimeric IgG1

**Purification:** Purified from cell culture supernatant by affinity chromatography

**Species Reactivity:** Human CSPG4

**Constituents:** Lyophilized from sterile PBS, pH 7.4. 5 % – 8% trehalose is added as protectants before lyophilization.

**Storage & Shipping:** Store at -20°C to -80°C for 12 months in lyophilized form. After reconstitution, if not intended for use within a month, aliquot and store at -80°C (Avoid repeated freezing and thawing).

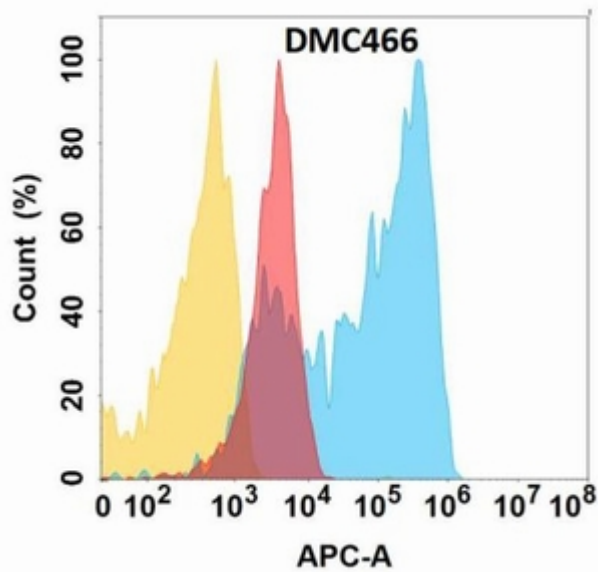


Figure 1. CSPG4 protein is highly expressed on the surface of Expi293 cell membrane. Flow cytometry analysis with Anti-CSPG4 (DMC466) on Expi293 cells transfected with human CSPG4 (Blue histogram) or Expi293 transfected with irrelevant protein (Red histogram), and Isotype antibody on Expi293 transfected with irrelevant protein (Orange histogram).