

## CSF1R (DM108) RABBIT MAB

目录: 28453

产品名称: CSF1R(DM108) Rabbit Monoclonal Antibody

基因符号: CSF1R;C-FMS;CD115;CSFR;FIM2;FMS;M-CSFR

描述: CSF1R antibody(DM108) Rabbit Monoclonal Antibody

背景: The protein encoded by this gene is the receptor for colony stimulating factor 1; a cytokine which controls the production; differentiation; and function of macrophages. This receptor mediates most if not all of the biological effects of this cytokine. Ligand binding activates the receptor kinase through a process of oligomerization and transphosphorylation. The encoded protein is a tyrosine kinase transmembrane receptor and member of the CSF1:PDGF receptor family of tyrosine-protein kinases. Mutations in this gene have been associated with a predisposition to myeloid malignancy. The first intron of this gene contains a transcriptionally inactive ribosomal protein L7 processed pseudogene oriented in the opposite direction. Alternative splicing results in multiple transcript variants. Expression of a splice variant from an LTR promoter has been found in Hodgkin lymphoma (HL); HL cell lines and anaplastic large cell lymphoma.

经过测试的应用: ELISA; Flow Cyt

推荐稀释度: ELISA 1:5000-10000; Flow Cyt 1:100

种属反应性: Rabbit

亚型: Rabbit IgG

纯化: Purified from cell culture supernatant by affinity chromatography

种属反应性: Human CSF1R

成分: Lyophilized from sterile PBS, pH 7.4. 5% – 8% trehalose is added as protectants before lyophilization.

储存和运输: Store at -20°C to -80°C for 12 months in lyophilized form. After reconstitution, if not intended for use within a month, aliquot and store at -80°C (Avoid repeated freezing and thawing).

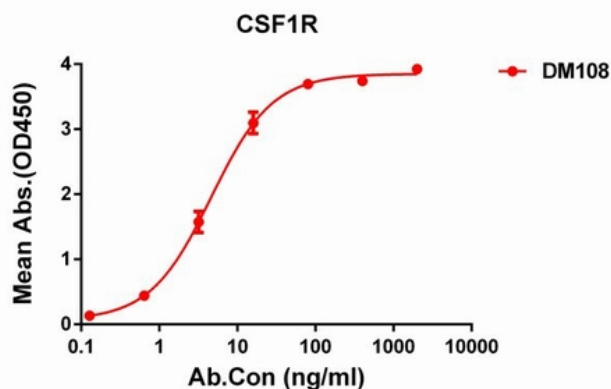


Figure 1. ELISA plate pre-coated by 2 µg/ml (100 µl/well) Human CSF1R protein, His tagged protein 11190 can bind Rabbit CSF1R monoclonal antibody (clone: DM108) in a linear range of 0.6-16 ng/ml.

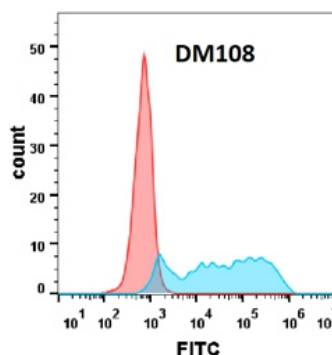


Figure 2. Flow cytometry analysis with CSF1R (DM108) on Expi293 cells transfected with human CSF1R (Blue histogram) or Expi293 transfected with irrelevant protein (Red histogram).