

## GPC3 MAB (CODRITUZUMAB)

**Cat.#:** 28086

**Product Name:** Anti-GPC3(Codrituzumab) Monoclonal Antibody

**Synonyms:** DGSX;GTR2-2;MXR7;OCI-5;SDYS;SGB;SGBS;SGBS1

**Description:** Anti-GPC3(codrituzumab ) Monoclonal Antibody

**Background:** Research grade biosimilar. Not for use in therapeutic or diagnostic procedures for humans or animals.

**Applications:** ELISA; Flow Cyt

**Recommended Dilutions:** ELISA 1:5000-10000; Flow Cyt 1:100

**Host Species:** Humanized

**Isotype:** IgG1

**Purification:** Purified from cell culture supernatant by affinity chromatography

**Species Reactivity:** Human GPC3

**Constituents:** Lyophilized from sterile PBS, pH 7.4. 5 % – 8% trehalose is added as protectants before lyophilization.

**Storage & Shipping:** Store at  $-20^{\circ}\text{C}$  to  $-80^{\circ}\text{C}$  for 12 months in lyophilized form. After reconstitution, if not intended for use within a month, aliquot and store at  $-80^{\circ}\text{C}$  (Avoid repeated freezing and thawing).

**Anti-GPC3 (codrituzumab biosimilar) mAb ELISA**  
0.1  $\mu\text{g}$  of Human GPC3, hFc tagged protein per well

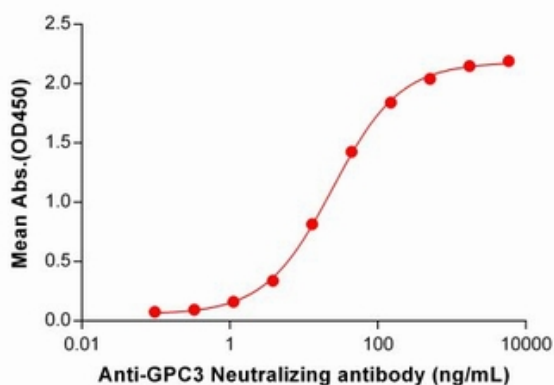


Figure 1. ELISA plate pre-coated by 1  $\mu\text{g}/\text{mL}$  (100  $\mu\text{l}/\text{well}$ ) Human GPC3 Protein, hFc Tag (11230) can bind Anti-GPC3 Neutralizing antibody (28086) in a linear range of 1.12-508.85 ng/mL. In order to specifically detect 28086, mouse anti-human Fab-specific antibody was used as detection antibody.

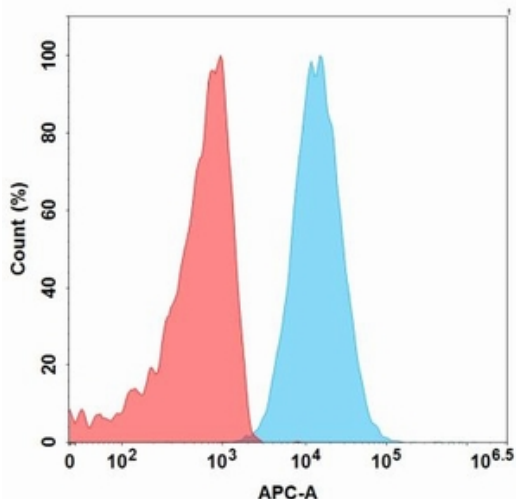


Figure 2. Flow cytometry analysis of Huh-7 cells stained with 1  $\mu\text{g}/\text{mL}$  Anti-GPC3 (codrituzumab biosimilar) mAb (28086) (Blue histogram) and unstained Huh-7 cells as a negative control (Red histogram).



# Product Description

Pioneering GTPase and Oncogene Product Development since 2010

---