

## **CLU (DMC461) IGG1 CHIMERIC MAB**

目录: 28237

产品名称: CLU(DMC461) IgG1 Chimeric Monoclonal Antibody

基因符号: AAG4; APOJ; CLI; KUB1; MGC24903; SGP-2; SGP2; SP-40; TRPM-2; TRPM2

描述: CLU antibody(DMC461) IgG1 Chimeric Monoclonal Antibody

背景: The protein encoded by this gene is a secreted chaperone that can under some stress conditions also be found in the cell cytosol. It has been suggested to be involved in several basic biological events such as cell death; tumor progression; and neurodegenerative disorders. Alternate splicing results in both coding and non-coding variants.[provided by RefSeq; May 2011]

经过测试的应用: Flow Cyt

推荐稀释度: Flow Cyt 1:100

种属反应性: Rabbit

亚型: Rabbit:Human Fc chimeric IgG1

纯化: Purified from cell culture supernatant by affinity chromatography

种属反应性: Human CLU

成分: Lyophilized from sterile PBS, pH 7.4. 5 % – 8% trehalose is added as protectants before lyophilization.

储存和运输: Store at -20°C to -80°C for 12 months in lyophilized form. After reconstitution, if not intended for use within a month, aliquot and store at -80°C (Avoid repeated freezing and thawing).

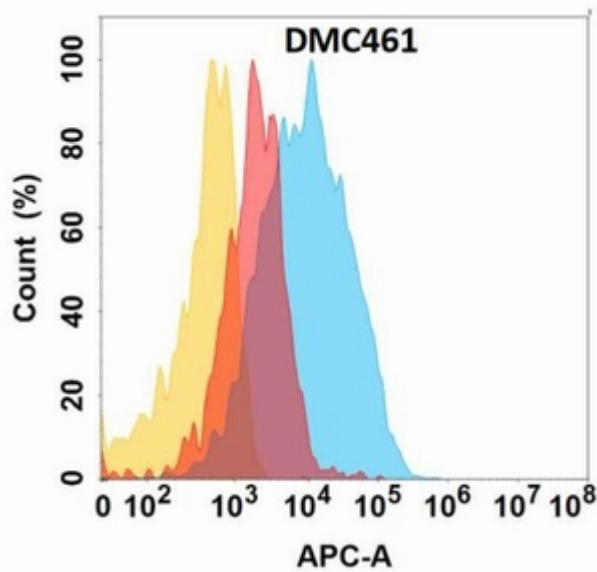


Figure 1. CLU protein is highly expressed on the surface of Expi293 cell membrane. Flow cytometry analysis with CLU (DMC461) on Expi293 cells transfected with human CLU (Blue histogram) or Expi293 transfected with irrelevant protein (Red histogram), and Isotype antibody on Expi293 transfected with irrelevant protein (Orange histogram).