

## CLEC9A (DMC469) IGG1 CHIMERIC MAB

**Cat.#:** 28245

**Product Name:** Anti-CLEC9A(DMC469) IgG1 Chimeric Monoclonal Antibody

**Synonyms:** CD370; DNGR-1; DNGR1; UNQ9341

**Description:** Anti-CLEC9A antibody(DMC469) IgG1 Chimeric Monoclonal Antibody

**Background:** CLEC9A is a group V C-type lectin-like receptor (CTLR) that functions as an activation receptor and is expressed on myeloid lineage cells (Huysamen et al.; 2008 [PubMed 18408006]).[supplied by OMIM; Aug 2008]

**Applications:** Flow Cyt

**Recommended Dilutions:** Flow Cyt 1:100

**Host Species:** Rabbit

**Isotype:** Rabbit:Human Fc chimeric IgG1

**Purification:** Purified from cell culture supernatant by affinity chromatography

**Species Reactivity:** Human CLEC9A

**Constituents:** Lyophilized from sterile PBS, pH 7.4. 5 % – 8% trehalose is added as protectants before lyophilization.

**Storage & Shipping:** Store at -20°C to -80°C for 12 months in lyophilized form. After reconstitution, if not intended for use within a month, aliquot and store at -80°C (Avoid repeated freezing and thawing).

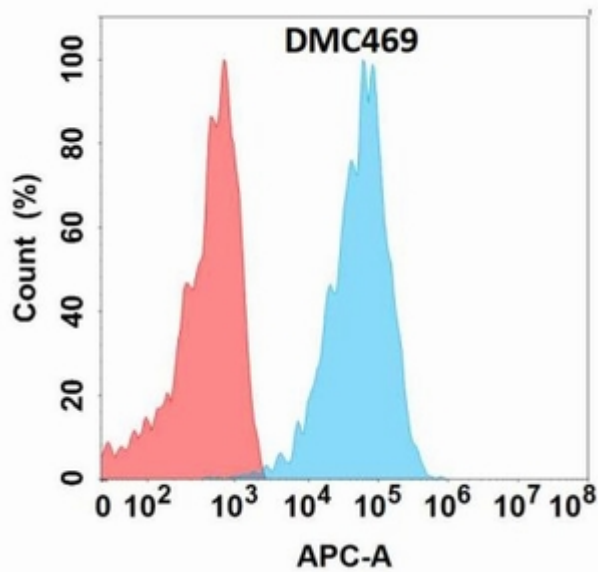


Figure 1. Flow cytometry analysis with Anti-CLEC9A (DMC469) on Expi293 cells transfected with human CLEC9A (Blue histogram) or Expi293 transfected with irrelevant protein (Red histogram).