

CLEC12A (DM165) RABBIT MAB

目录: 28508

产品名称: CLEC12A(DM165) Rabbit Monoclonal Antibody

基因符号: CLEC12A;MICL;CLL-1;CLL1;DCAL2;DCAL-2;CD371

描述: CLEC12A antibody(DM165) Rabbit Monoclonal Antibody

背景: This gene encodes a member of the C-type lectin:C-type lectin-like domain (CTL:CTLD) superfamily. Members of this family share a common protein fold and have diverse functions; such as cell adhesion; cell-cell signaling; glycoprotein turnover; and roles in inflammation and immune response. The protein encoded by this gene is a negative regulator of granulocyte and monocyte function. Several alternatively spliced transcript variants of this gene have been described; but the full-length nature of some of these variants has not been determined. This gene is closely linked to other CTL:CTLD superfamily members in the natural killer gene complex region on chromosome 12p13.

经过测试的应用: ELISA; Flow Cyt

推荐稀释度: ELISA 1:5000-10000; Flow Cyt 1:100

种属反应性: Rabbit

亚型: Rabbit IgG

纯化: Purified from cell culture supernatant by affinity chromatography

种属反应性: Human CLEC12A

成分: Lyophilized from sterile PBS, pH 7.4. 5 % – 8% trehalose is added as protectants before lyophilization.

储存和运输: Store at -20°C to -80°C for 12 months in lyophilized form. After reconstitution, if not intended for use within a month, aliquot and store at -80°C (Avoid repeated freezing and thawing).

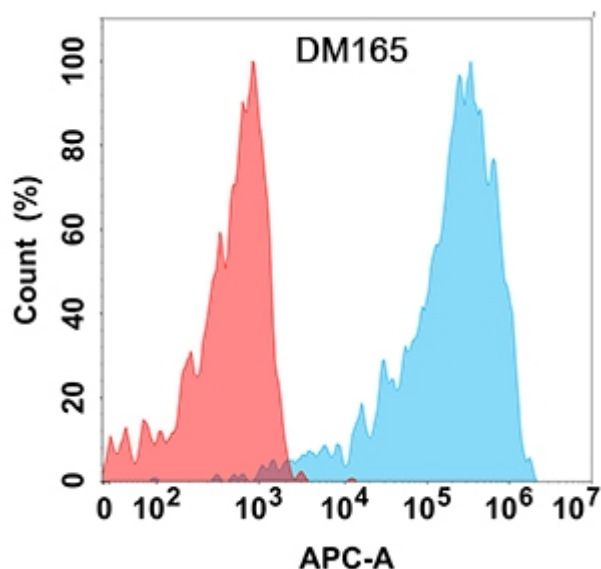


Figure 1. Flow cytometry analysis with CLEC12A (DM165) on Expi293 cells transfected with human CLEC12A (Blue histogram) or Expi293 transfected with irrelevant protein (Red histogram).