

CEACAM6 (DMC685) IGG1 CHIMERIC MAB

Cat.#: 28283

Product Name: Anti-CEACAM6(DMC685) IgG1 Chimeric Monoclonal Antibody

Synonyms: CD66c; CEAL; NCA

Description: Anti-CEACAM6 antibody(DMC685) IgG1 Chimeric Monoclonal Antibody

Background: This gene encodes a protein that belongs to the carcinoembryonic antigen (CEA) family whose members are glycosyl phosphatidyl inositol (GPI) anchored cell surface glycoproteins. Members of this family play a role in cell adhesion and are widely used as tumor markers in serum immunoassay determinations of carcinoma. This gene affects the sensitivity of tumor cells to adenovirus infection. The protein encoded by this gene acts as a receptor for adherent-invasive E. coli adhesion to the surface of ileal epithelial cells in patients with Crohn's disease. This gene is clustered with genes and pseudogenes of the cell adhesion molecules subgroup of the CEA family on chromosome 19. [provided by RefSeq; Apr 2014]

Applications: Flow Cyt

Recommended Dilutions: Flow Cyt 1:100

Host Species: Rabbit

Isotype: Rabbit:Human Fc chimeric IgG1

Purification: Purified from cell culture supernatant by affinity chromatography

Species Reactivity: Human CEACAM6

Constituents: Lyophilized from sterile PBS, pH 7.4. 5 % – 8% trehalose is added as protectants before lyophilization.

Storage & Shipping: Store at -20°C to -80°C for 12 months in lyophilized form. After reconstitution, if not intended for use within a month, aliquot and store at -80°C (Avoid repeated freezing and thawing).

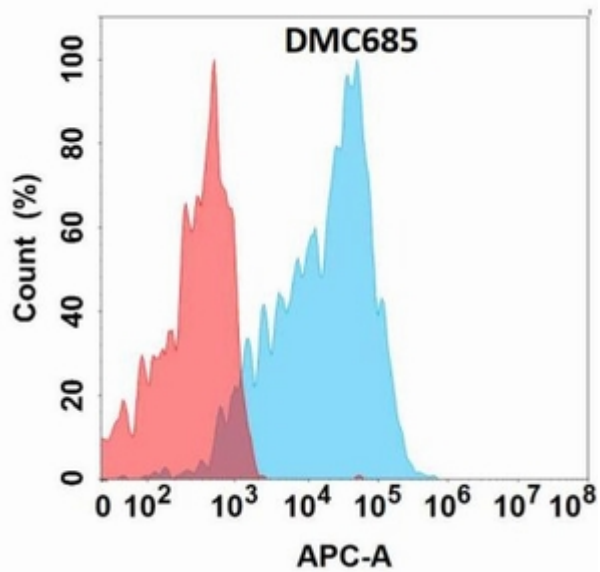


Figure 1. Flow cytometry analysis with Anti-CEACAM6(DMC685) on Expi293 cells transfected with human CEACAM6(Blue histogram) or Expi293 transfected with irrelevant protein (Red histogram).