

## CDC42 PAB

### Cdc42 Polyclonal Antibody

**Cat. #:** 21010

**Gene Symbol:** CDC42

**Description:** Anti-Cdc42 Rabbit Polyclonal Antibody

**Background:** Small GTPases are a super-family of cellular signaling regulators. Cdc42 belongs to the Rho sub-family of GTPases that regulate cell motility, cell division, and gene transcription. GTP binding increases the activity of Cdc42, and the hydrolysis of GTP to GDP renders it inactive. GTP hydrolysis is aided by GTPase activating proteins (GAPs), while exchange of GDP for GTP is facilitated by guanine nucleotide exchange factors (GEFs).

**Immunogen:** A synthetic peptide from a unique region of Cdc42

**Applications:** ELISA, WB, IHC

**Recommended Dilutions:**

ELISA: 1:100–1:5000

WB: 1:100–1:2000

IHC: 1:50–100

**Concentration:** 0.2 mg/ml

**Host Species:** Rabbit

**Format:** Liquid

**Clonality:** Polyclonal

**Isotype:** IgG

**Purity:** Purified from serum

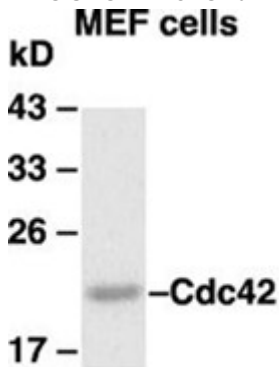
**Preservative:** No

**Constituents:** PBS (without  $Mg^{2+}$  and  $Ca^{2+}$ ), pH 7.4, 150 mM NaCl, 50% glycerol

**Species Reactivity:** Cdc42 antibody recognizes Cdc42 from vertebrates.

**Storage Conditions:** Store at  $-20^{\circ}C$ . Avoid repeated freezing and thawing

**Western blot:**



**WB: anti-Cdc42 pAb**

**Western blot analysis of Cdc42 proteins.**

MEF whole-cell lysate was used for western blot with the polyclonal Anti-Cdc42 antibody (cat. #21010).