

## CDC42 CHICKEN

### Chicken Cdc42

**Cat. #:** 21019

**Gene Symbol:** CDC42

**Description:** Anti-Cdc42 Chicken Polyclonal Antibody

**Background:** Small GTPases are a super-family of cellular signaling regulators. Cdc42 belongs to the Rho sub-family of GTPases that regulate cell motility, cell division, and gene transcription. GTP binding increases the activity of Cdc42, and the hydrolysis of GTP to GDP renders it inactive. GTP hydrolysis is aided by GTPase activating proteins (GAPs), while exchange of GDP for GTP is facilitated by guanine nucleotide exchange factors (GEFs).

**Immunogen:** Recombinant full length Cdc42 protein

**Applications:** ELISA, WB, IHC

**Recommended Dilutions:**

ELISA: 1:100–1:5000

WB: 1:100–1:1000

IHC: 1:100–1:1000

**Concentration:** 1 mg/ml

**Host Species:** Chicken

**Format:** Liquid

**Clonality:** Polyclonal

**Isotype:** IgY

**Purity:** Purified from egg yolk

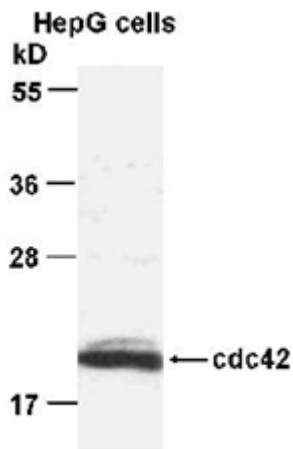
**Preservative:** No

**Constituents:** PBS (without  $Mg^{2+}$  and  $Ca^{2+}$ ), pH 7.4, 150 mM NaCl, 50% glycerol

**Species Reactivity:** Cdc42 antibody recognizes Cdc42 from vertebrates.

**Storage Conditions:** Store at  $-20^{\circ}C$ . Avoid repeated freezing and thawing

## Western blot:



WB: anti-cdc42 pAb

## Western blot analysis of Cdc42 proteins.

HepG whole-cell lysate was used for Western blot with the chicken polyclonal Anti-Cdc42 antibody (cat # 21019).