

CD7 (DM118) RABBIT MAB

Cat.#: 28463

Product Name: Anti-CD7(DM118) Rabbit Monoclonal Antibody

Synonyms: CD7;GP40;TP41;LEU-9;Tp40

Description: Anti-CD7 antibody(DM118) Rabbit Monoclonal Antibody

Background: This gene encodes a transmembrane protein which is a member of the immunoglobulin superfamily. This protein is found on thymocytes and mature T cells. It plays an essential role in T-cell interactions and also in T-cell:B-cell interaction during early lymphoid development.

Applications: ELISA; Flow Cyt

Recommended Dilutions: ELISA 1:5000-10000; Flow Cyt 1:100

Host Species: Rabbit

Isotype: Rabbit IgG

Purification: Purified from cell culture supernatant by affinity chromatography

Species Reactivity: Human CD7

Constituents: Lyophilized from sterile PBS, pH 7.4. 5% – 8% trehalose is added as protectants before lyophilization.

Storage & Shipping: Store at -20°C to -80°C for 12 months in lyophilized form. After reconstitution, if not intended for use within a month, aliquot and store at -80°C (Avoid repeated freezing and thawing).

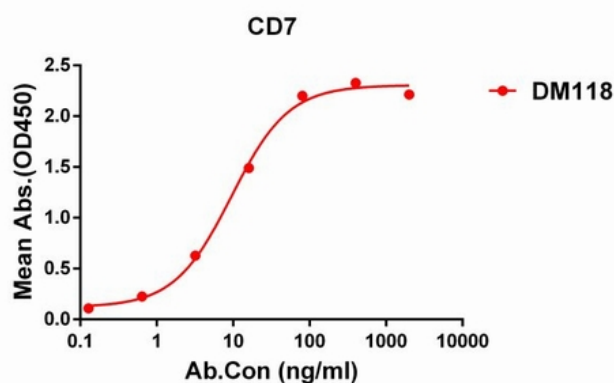


Figure 1. ELISA plate pre-coated by 1 µg/ml (100 µl/well) Human CD7 protein, mFc-His tagged protein 11276 can bind Rabbit anti-CD7 monoclonal antibody (clone: DM118) in a linear range of 0.2-60 ng/ml.

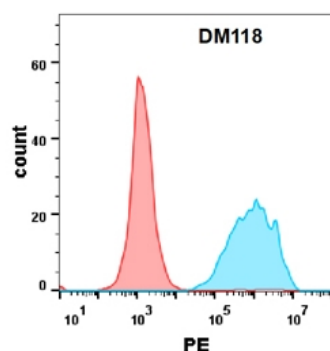


Figure 2. Flow cytometry analysis with Anti-CD7 (DM118) on Expi293 cells transfected with human CD7 (Blue histogram) or Expi293 transfected with irrelevant protein (Red histogram).