

CD5 (DM161) RABBIT MAB

Cat.#: 28505

Product Name: Anti-CD5(DM161) Rabbit Monoclonal Antibody

Synonyms: CD5;LEU1

Description: Anti-CD5 antibody(DM161) Rabbit Monoclonal Antibody

Background: This gene encodes a member of the scavenger receptor cysteine-rich (SRCR) superfamily. Members of this family are secreted or membrane-anchored proteins mainly found in cells associated with the immune system. This protein is a type-I transmembrane glycoprotein found on the surface of thymocytes; T lymphocytes and a subset of B lymphocytes. The encoded protein contains three SRCR domains and may act as a receptor to regulate T-cell proliferation. Alternative splicing results in multiple transcript variants encoding different isoforms.

Applications: ELISA; Flow Cyt

Recommended Dilutions: ELISA 1:5000-10000; Flow Cyt 1:100

Host Species: Rabbit

Isotype: Rabbit IgG

Purification: Purified from cell culture supernatant by affinity chromatography

Species Reactivity: Human CD5

Constituents: Lyophilized from sterile PBS, pH 7.4. 5 % – 8% trehalose is added as protectants before lyophilization.

Storage & Shipping: Store at -20°C to -80°C for 12 months in lyophilized form. After reconstitution, if not intended for use within a month, aliquot and store at -80°C (Avoid repeated freezing and thawing).

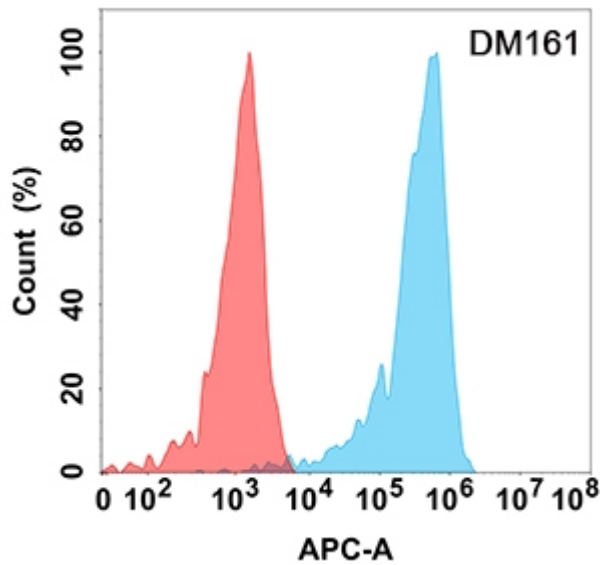


Figure 1. Flow cytometry analysis with Anti-CD5 (DM161) on Expi293 cells transfected with human CD5 (Blue histogram) or Expi293 transfected with irrelevant protein (Red histogram).