

CD48 (DM44) RABBIT MAB

Cat.#: 28334

Product Name: Anti-CD48(DM44) Rabbit Monoclonal Antibody

Synonyms: CD48; BCM1; SLAMF2; BLAST; BLAST1; MEM-102; TCT.1; BCM-1; SLAMF-2; BLAST-1

Description: Anti-CD48 antibody(DM44) Rabbit Monoclonal Antibody

Background: This gene encodes a member of the CD2 subfamily of immunoglobulin-like receptors which includes SLAM (signaling lymphocyte activation molecules) proteins. The encoded protein is found on the surface of lymphocytes and other immune cells; dendritic cells and endothelial cells; and participates in activation and differentiation pathways in these cells. The encoded protein does not have a transmembrane domain; however, but is held at the cell surface by a GPI anchor via a C-terminal domain which maybe cleaved to yield a soluble form of the receptor. Multiple transcript variants encoding different isoforms have been found for this gene.

Applications: ELISA; Flow Cyt

Recommended Dilutions: ELISA 1:5000-10000; Flow Cyt 1:100

Host Species: Rabbit

Isotype: Rabbit IgG

Purification: Purified from cell culture supernatant by affinity chromatography

Species Reactivity: Human CD48

Constituents: Lyophilized from sterile PBS, pH 7.4. 5 % - 8% trehalose is added as protectants before lyophilization.

Storage & Shipping: Store at -20°C to -80°C for 12 months in lyophilized form. After reconstitution, if not intended for use within a month, aliquot and store at -80°C (Avoid repeated freezing and thawing).

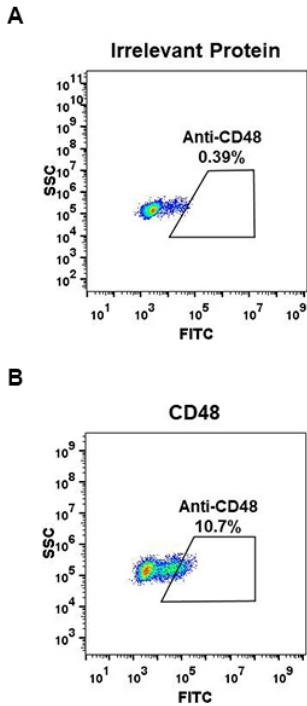


Figure 1. Expi 293 cell line transfected with irrelevant protein (left) and human CD48 (right) were surface stained with Rabbit anti-CD48 monoclonal antibody 1 μ g/ml (clone: DM44) followed by Alexa 488-conjugated anti-rabbit IgG secondary antibody.

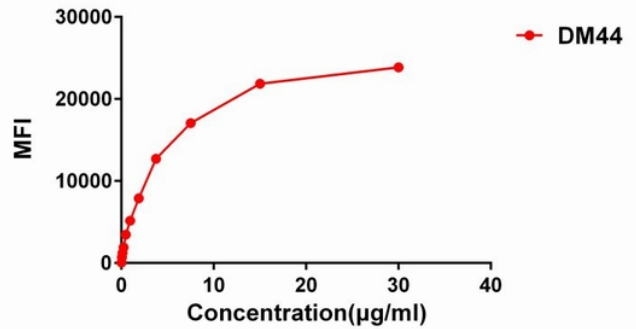


Figure 2. Flow cytometry data of serially titrated Rabbit anti-CD48 monoclonal antibody (clone: DM44) on H929 cells. The Y-axis represents the mean fluorescence intensity (MFI) while the X-axis represents the concentration of IgG used.

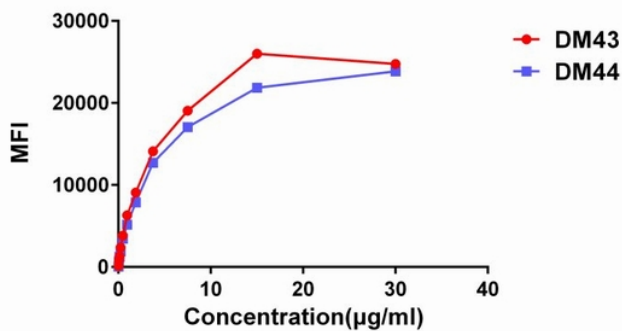


Figure 3. Affinity ranking of different Rabbit anti-CD48 mAb clones by titration of different concentration onto H929 cells. The Y-axis represents the mean fluorescence intensity (MFI) while the X-axis represents the concentration of IgG used.