

CD46 (DM145) RABBIT MAB

目录: 28489

产品名称: CD46(DM145) Rabbit Monoclonal Antibody

基因符号: CD46;AHUS2;MCP;MIC10;TLX;TRA2.10

描述: CD46 antibody(DM145) Rabbit Monoclonal Antibody

背景: The protein encoded by this gene is a type I membrane protein and is a regulatory part of the complement system. The encoded protein has cofactor activity for inactivation of complement components C3b and C4b by serum factor I; which protects the host cell from damage by complement. In addition; the encoded protein can act as a receptor for the Edmonston strain of measles virus; human herpesvirus-6; and type IV pili of pathogenic *Neisseria*. Finally; the protein encoded by this gene may be involved in the fusion of the spermatozoa with the oocyte during fertilization. Mutations at this locus have been associated with susceptibility to hemolytic uremic syndrome. Alternatively spliced transcript variants encoding different isoforms have been described.

经过测试的应用: ELISA; Flow Cyt

推荐稀释度: ELISA 1:5000-10000; Flow Cyt 1:100

种属反应性: Rabbit

亚型: Rabbit IgG

纯化: Purified from cell culture supernatant by affinity chromatography

种属反应性: Human CD46

成分: Lyophilized from sterile PBS, pH 7.4. 5% - 8% trehalose is added as protectants before lyophilization.

储存和运输: Store at -20°C to -80°C for 12 months in lyophilized form. After reconstitution, if not intended for use within a month, aliquot and store at -80°C (Avoid repeated freezing and thawing).

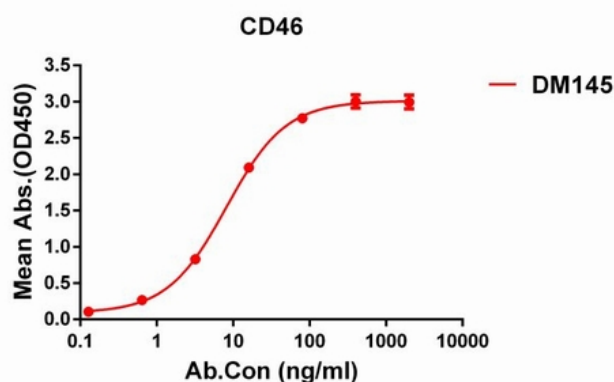


Figure 1. ELISA plate pre-coated by 1 µg/ml (100 µl/well) Human CD46 protein, His tagged protein 11220 can bind Rabbit CD46 monoclonal antibody (clone: DM145) in a linear range of 1-60 ng/ml.

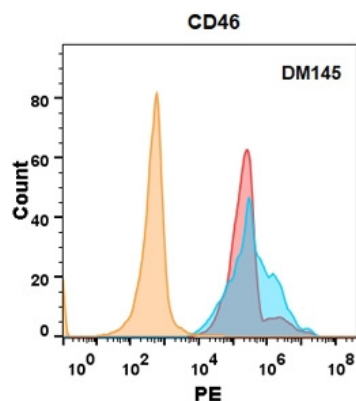


Figure 2. CD46 protein is highly expressed on the surface of Expi293 cell membrane. Flow cytometry analysis with CD46 (DM145) on Expi293 cells transfected with human CD46 (Blue histogram) or Expi293 transfected with irrelevant protein (Red histogram), and Isotype antibody on Expi293 transfected with irrelevant protein (Orange histogram).