

CD43 (DM211) RABBIT MAB

目录: 28554

产品名称: CD43(DM211) Rabbit Monoclonal Antibody

基因符号: CD43; GALGP; GPLI15; LSN

描述: CD43 antibody(DM211) Rabbit Monoclonal Antibody

背景: This gene encodes a highly sialylated glycoprotein that functions in antigen-specific activation of T cells; and is found on the surface of thymocytes; T lymphocytes; monocytes; granulocytes; and some B lymphocytes. It contains a mucin-like extracellular domain; a transmembrane region and a carboxy-terminal intracellular region. The extracellular domain has a high proportion of serine and threonine residues; allowing extensive O-glycosylation; and has one potential N-glycosylation site; while the carboxy-terminal region has potential phosphorylation sites that may mediate transduction of activation signals. Different glycoforms of this protein have been described. In stimulated immune cells; proteolytic cleavage of the extracellular domain occurs in some cell types; releasing a soluble extracellular fragment. Defects in expression of this gene are associated with Wiskott-Aldrich syndrome. [provided by RefSeq; Sep 2017]

经过测试的应用: ELISA; Flow Cyt

推荐稀释度: ELISA 1:5000-10000; Flow Cyt 1:100

种属反应性: Rabbit

亚型: Rabbit IgG

纯化: Purified from cell culture supernatant by affinity chromatography

种属反应性: Human CD43

成分: Lyophilized from sterile PBS, pH 7.4. 5 % – 8% trehalose is added as protectants before lyophilization.

储存和运输: Store at -20°C to -80°C for 12 months in lyophilized form. After reconstitution, if not intended for use within a month, aliquot and store at -80°C (Avoid repeated freezing and thawing).

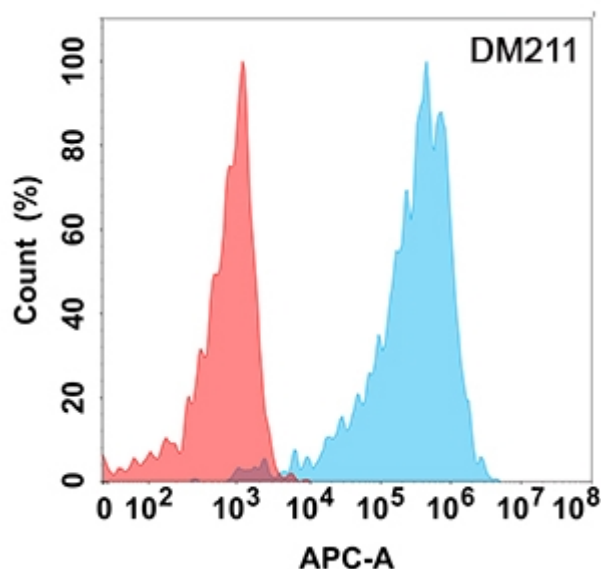


Figure 1. Flow cytometry analysis with CD43 (DM211) on Expi293 cells transfected with human CD43 (Blue histogram) or Expi293 transfected with irrelevant protein (Red histogram).