

CD38 (DM30) RABBIT MAB

目录: 28316

产品名称: CD38(DM30) Rabbit Monoclonal Antibody

基因符号: TIO; cADPr hydrolase 1

描述: CD38 antibody(DM30) Rabbit Monoclonal Antibody

背景: CD antigen CD38 is also known as ADP-ribosyl cyclase 1; which belongs to the ADP-ribosyl cyclase family. CD38 is expressed at high levels in pancreas; liver; kidney; brain; testis; ovary; placenta; malignant lymphoma and neuroblastoma. CD38 is a multifunctional ectoenzyme that catalyzes the synthesis and hydrolysis of cyclic ADP-ribose (cADPR) from NAD to ADP-ribose. These reaction products are essential for the regulation of intracellular Ca^{2+} . The loss of CD38 function is associated with impaired immune responses; metabolic disturbances; and behavioral modifications. The CD38 protein is a marker of cell activation. It has been connected to HIV infection; leukemias; myelomas; solid tumors; type II diabetes mellitus and bone metabolism. CD38 has been used as a prognostic marker in leukemia.

经过测试的应用: ELISA; Flow Cyt

推荐稀释度: ELISA 1:5000-10000; Flow Cyt 1:100

种属反应性: Rabbit

亚型: Rabbit IgG

纯化: Purified from cell culture supernatant by affinity chromatography

种属反应性: Human CD38

成分: Lyophilized from sterile PBS, pH 7.4. 5% - 8% trehalose is added as protectants before lyophilization.

储存和运输: Store at -20°C to -80°C for 12 months in lyophilized form. After reconstitution, if not intended for use within a month, aliquot and store at -80°C (Avoid repeated freezing and thawing).

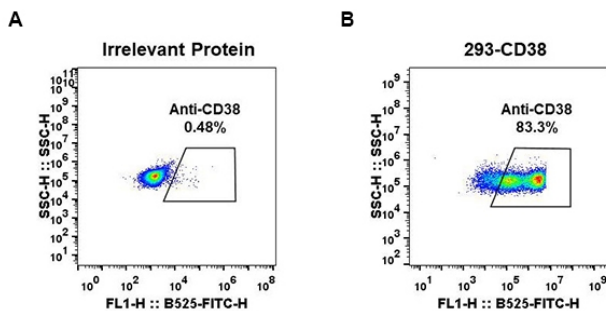


Figure 1. Expi 293 cell line transfected with irrelevant protein (left) and human CD38 (right) were surface stained with Rabbit CD38 monoclonal antibody $1\mu\text{g}/\text{ml}$ (clone: DM30) followed by Alexa 488-conjugated rabbit IgG secondary antibody.

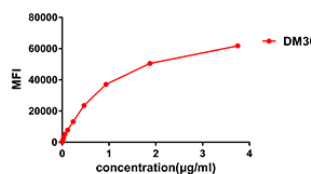


Figure 2. Flow cytometry data of serially titrated Rabbit CD38 monoclonal antibody (clone: DM30) on Raji cells. The Y-axis represents the mean fluorescence intensity (MFI) while the X-axis represents the concentration of IgG used.

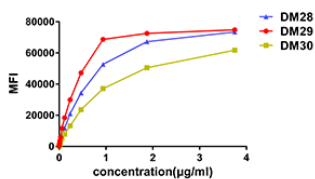


Figure 3. Affinity ranking of different Rabbit CD38 mAb clones by titration of different concentration onto Raji cells. The Y-axis represents the mean fluorescence intensity (MFI) while the X-axis represents the concentration of IgG used.