

CD24 (DMC213) IGG1 CHIMERIC MAB

目录: 28166

产品名称: CD24(DMC213) IgG1 Chimeric Monoclonal Antibody

基因符号: CD24A

描述: CD24 antibody(DMC213) IgG1 Chimeric Monoclonal Antibody

背景: This gene encodes a sialoglycoprotein that is expressed on mature granulocytes and B cells and modulates growth and differentiation signals to these cells. The precursor protein is cleaved to a short 32 amino acid mature peptide which is anchored via a glycosyl phosphatidylinositol (GPI) link to the cell surface. This gene was missing from previous genome assemblies; but is properly located on chromosome 6. Non-transcribed pseudogenes have been designated on chromosomes 1; 15; 20; and Y. Alternative splicing results in multiple transcript variants.

经过测试的应用: ELISA; Flow Cyt

推荐稀释度: ELISA 1:5000-10000; Flow Cyt 1:100

种属反应性: Rabbit

亚型: Rabbit:Human Fc chimeric IgG1

纯化: Purified from cell culture supernatant by affinity chromatography

种属反应性: Human CD24

成分: Lyophilized from sterile PBS, pH 7.4. 5 % – 8% trehalose is added as protectants before lyophilization.

储存和运输: Store at -20°C to -80°C for 12 months in lyophilized form.

After reconstitution, if not intended for use within a month, aliquot and store at -80°C (Avoid repeated freezing and thawing).

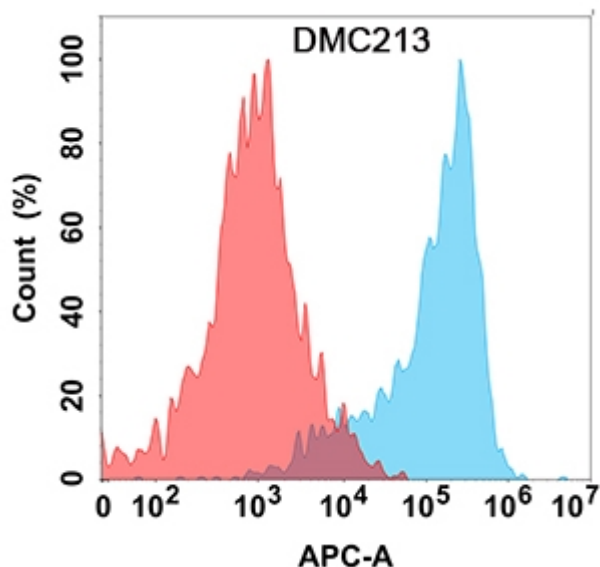


Figure 1. Flow cytometry analysis with CD24 (DMC213) on Expi293 cells transfected with human CD24 (Blue histogram) or Expi293 transfected with irrelevant protein (Red histogram).