

## CD171 (DM155) RABBIT MAB

目录: 28499

产品名称: CD171(DM155) Rabbit Monoclonal Antibody

基因符号: CAML1; CD171; HSAS; HSAS1; MASA; MIC5; N-CAM-L1; N-CAML1; NCAM-L1; S10; SPG1

描述: CD171 antibody(DM155) Rabbit Monoclonal Antibody

背景: The protein encoded by this gene is an axonal glycoprotein belonging to the immunoglobulin supergene family. The ectodomain, consisting of several immunoglobulin-like domains and fibronectin-like repeats (type III); is linked via a single transmembrane sequence to a conserved cytoplasmic domain. This cell adhesion molecule plays an important role in nervous system development; including neuronal migration and differentiation. Mutations in the gene cause X-linked neurological syndromes known as CRASH (corpus callosum hypoplasia; retardation; aphasia; spastic paraplegia and hydrocephalus). Alternative splicing of this gene results in multiple transcript variants; some of which include an alternate exon that is considered to be specific to neurons.

经过测试的应用: ELISA; Flow Cyt

推荐稀释度: ELISA 1:5000-10000; Flow Cyt 1:100

种属反应性: Rabbit

亚型: Rabbit IgG

纯化: Purified from cell culture supernatant by affinity chromatography

种属反应性: Human CD171

成分: Lyophilized from sterile PBS, pH 7.4. 5% - 8% trehalose is added as protectants before lyophilization.

储存和运输: Store at -20°C to -80°C for 12 months in lyophilized form. After reconstitution, if not intended for use within a month, aliquot and store at -80°C (Avoid repeated freezing and thawing).

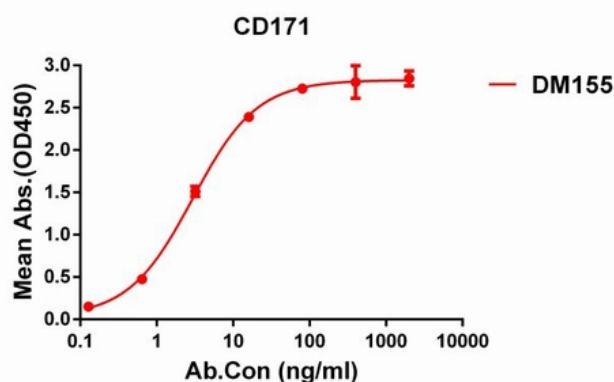


Figure 1. ELISA plate pre-coated by 1 µg/ml (100 µl/well) Human CD171 protein, His tagged protein 11239 can bind Rabbit CD171 monoclonal antibody (clone: DM155) in a linear range of 1-100 ng/ml.

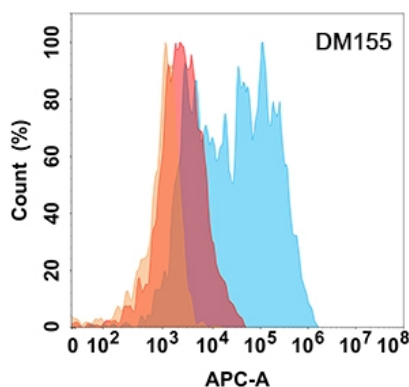


Figure 2. CD171 protein is highly expressed on the surface of Expi293 cell membrane. Flow cytometry analysis with CD171 (DM155) on Expi293 cells transfected with human CD171 (Blue histogram) or Expi293 transfected with irrelevant protein (Red histogram), and Isotype antibody on Expi293 transfected with irrelevant protein (Orange histogram).