

## CD142 (DMC463) IGG1 CHIMERIC MAB

**Cat.#:** 28239

**Product Name:** Anti-CD142(DMC463) IgG1 Chimeric Monoclonal Antibody

**Synonyms:** TF; Coagulation factor III; F3

**Description:** Anti-CD142 antibody(DMC463) IgG1 Chimeric Monoclonal Antibody

**Background:** This gene encodes coagulation factor III which is a cell surface glycoprotein. This factor enables cells to initiate the blood coagulation cascades; and it functions as the high-affinity receptor for the coagulation factor VII. The resulting complex provides a catalytic event that is responsible for initiation of the coagulation protease cascades by specific limited proteolysis. Unlike the other cofactors of these protease cascades; which circulate as nonfunctional precursors; this factor is a potent initiator that is fully functional when expressed on cell surfaces; for example; on monocytes. There are 3 distinct domains of this factor: extracellular; transmembrane; and cytoplasmic. Platelets and monocytes have been shown to express this coagulation factor under procoagulatory and proinflammatory stimuli; and a major role in HIV-associated coagulopathy has been described. Platelet-dependent monocyte expression of coagulation factor III has been described to be associated with Coronavirus Disease 2019 (COVID-19) severity and mortality. This protein is the only one in the coagulation pathway for which a congenital deficiency has not been described. Alternate splicing results in multiple transcript variants.[provided by RefSeq; Aug 2020]

**Applications:** Flow Cyt

**Recommended Dilutions:** Flow Cyt 1:100

**Host Species:** Rabbit

**Isotype:** Rabbit:Human Fc chimeric IgG1

**Purification:** Purified from cell culture supernatant by affinity chromatography

**Species Reactivity:** Human CD142

**Constituents:** Lyophilized from sterile PBS, pH 7.4. 5 % – 8% trehalose is added as protectants before lyophilization.

**Storage & Shipping:** Store at -20°C to -80°C for 12 months in lyophilized form. After reconstitution, if not intended for use within a month, aliquot and store at -80°C (Avoid repeated freezing and thawing).

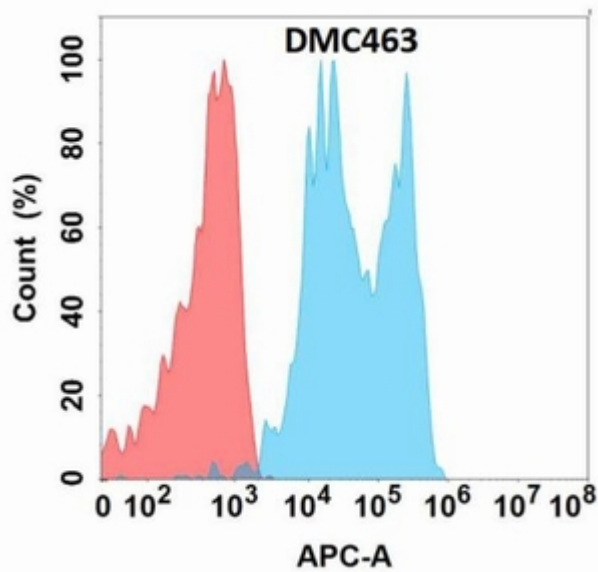


Figure 1. Flow cytometry analysis with Anti-CD142 (DMC463) on Expi293 cells transfected with human CD142 (Blue histogram) or Expi293 transfected with irrelevant protein (Red histogram).