

CD112 (DMC224) IGG1 CHIMERIC MAB

目录: 28173

产品名称: CD112(DMC224) IgG1 Chimeric Monoclonal Antibody

基因符号: NECTIN2; HVEB; PRR2; PVRL2; PVRR2

描述: CD112 antibody(DMC224) IgG1 Chimeric Monoclonal Antibody

背景: This gene encodes a single-pass type I membrane glycoprotein with two Ig-like C2-type domains and an Ig-like V-type domain. This protein is one of the plasma membrane components of adherens junctions. It also serves as an entry for certain mutant strains of herpes simplex virus and pseudorabies virus; and it is involved in cell to cell spreading of these viruses. Variations in this gene have been associated with differences in the severity of multiple sclerosis. Alternate transcriptional splice variants; encoding different isoforms; have been characterized.

经过测试的应用: ELISA; Flow Cyt

推荐稀释度: ELISA 1:5000-10000; Flow Cyt 1:100

种属反应性: Rabbit

亚型: Rabbit:Human Fc chimeric IgG1

纯化: Purified from cell culture supernatant by affinity chromatography

种属反应性: Human CD112

成分: Lyophilized from sterile PBS, pH 7.4. 5 % – 8% trehalose is added as protectants before lyophilization.

储存和运输: Store at -20°C to -80°C for 12 months in lyophilized form.

After reconstitution, if not intended for use within a month, aliquot and store at -80°C (Avoid repeated freezing and thawing).

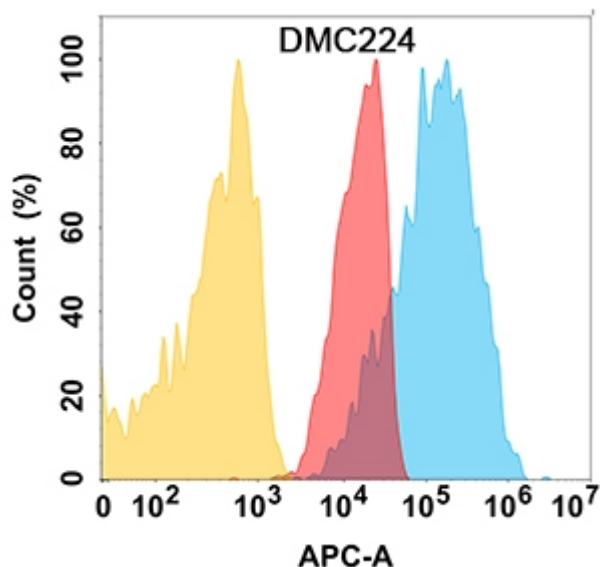


Figure 1. CD112 protein is highly expressed on the surface of Expi293 cell membrane. Flow cytometry analysis with CD112 (DMC224) on Expi293 cells transfected with human CD112 (Blue histogram) or Expi293 transfected with irrelevant protein (Red histogram), and Isotype antibody on Expi293 transfected with irrelevant protein (Orange histogram).