

## CD10 (DM176) RABBIT MAB

目录: 28519

产品名称: CD10(DM176) Rabbit Monoclonal Antibody

基因符

号: MME;CALLA;CD10;DKFZp686O16152;MGC126681;MGC126707;NEP;SFE;Neprilysin

描述: CD10 antibody(DM176) Rabbit Monoclonal Antibody

背景: The protein encoded by this gene is a type II transmembrane glycoprotein and a common acute lymphocytic leukemia antigen that is an important cell surface marker in the diagnosis of human acute lymphocytic leukemia (ALL). The encoded protein is present on leukemic cells of pre-B phenotype; which represent 85% of cases of ALL. This protein is not restricted to leukemic cells; however, and is found on a variety of normal tissues. The protein is a neutral endopeptidase that cleaves peptides at the amino side of hydrophobic residues and inactivates several peptide hormones including glucagon; enkephalins; substance P; neurotensin; oxytocin; and bradykinin.

经过测试的应用: ELISA; Flow Cyt

推荐稀释度: ELISA 1:5000-10000; Flow Cyt 1:100

种属反应性: Rabbit

亚型: Rabbit IgG

纯化: Purified from cell culture supernatant by affinity chromatography

种属反应性: Human CD10

成分: Lyophilized from sterile PBS, pH 7.4. 5 % - 8% trehalose is added as protectants before lyophilization.

储存和运输: Store at -20°C to -80°C for 12 months in lyophilized form.

After reconstitution, if not intended for use within a month, aliquot and store at -80°C (Avoid repeated freezing and thawing).

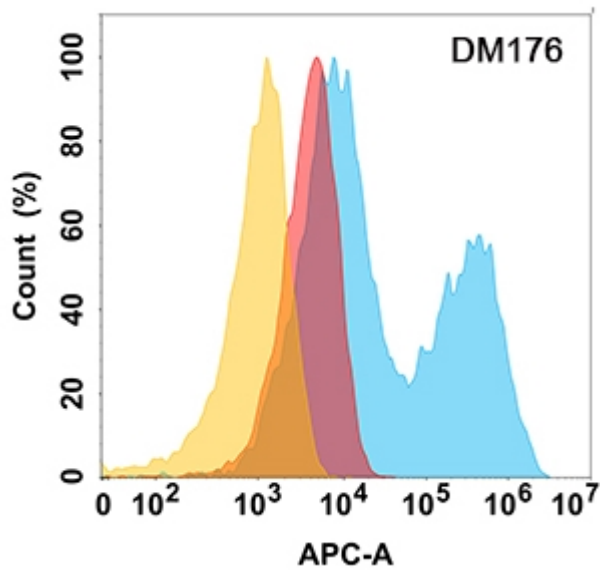


Figure 1. CD10 protein is highly expressed on the surface of Expi293 cell membrane. Flow cytometry analysis with CD10 (DM176) on Expi293 cells transfected with human CD10 (Blue histogram) or Expi293 transfected with irrelevant protein (Red histogram), and Isotype antibody on Expi293 transfected with irrelevant protein (Orange histogram).