

CCR8 (DM180) RABBIT MAB

目录: 28523

产品名称: CCR8(DM180) Rabbit Monoclonal Antibody

基因符号: CC-CKR-8; CCR-8; CDw198; CKRL1; CMKBR8; CMKBRL2; CY6; GPRCY6; TER1

描述: CCR8 antibody(DM180) Rabbit Monoclonal Antibody

背景: This gene encodes a member of the beta chemokine receptor family; which is predicted to be a seven transmembrane protein similar to G protein-coupled receptors. Chemokines and their receptors are important for the migration of various cell types into the inflammatory sites. This receptor protein preferentially expresses in the thymus. I-309; thymus activation-regulated cytokine (TARC) and macrophage inflammatory protein-1 beta (MIP-1 beta) have been identified as ligands of this receptor. Studies of this receptor and its ligands suggested its role in regulation of monocyte chemotaxis and thymic cell apoptosis. More specifically; this receptor may contribute to the proper positioning of activated T cells within the antigenic challenge sites and specialized areas of lymphoid tissues. This gene is located at the chemokine receptor gene cluster region.

经过测试的应用: ELISA; Flow Cyt

推荐稀释度: ELISA 1:5000-10000; Flow Cyt 1:100

种属反应性: Rabbit

亚型: Rabbit IgG

纯化: Purified from cell culture supernatant by affinity chromatography

种属反应性: Human CCR8

成分: Lyophilized from sterile PBS, pH 7.4. 5 % – 8% trehalose is added as protectants before lyophilization.

储存和运输: Store at -20°C to -80°C for 12 months in lyophilized form. After reconstitution, if not intended for use within a month, aliquot and store at -80°C (Avoid repeated freezing and thawing).

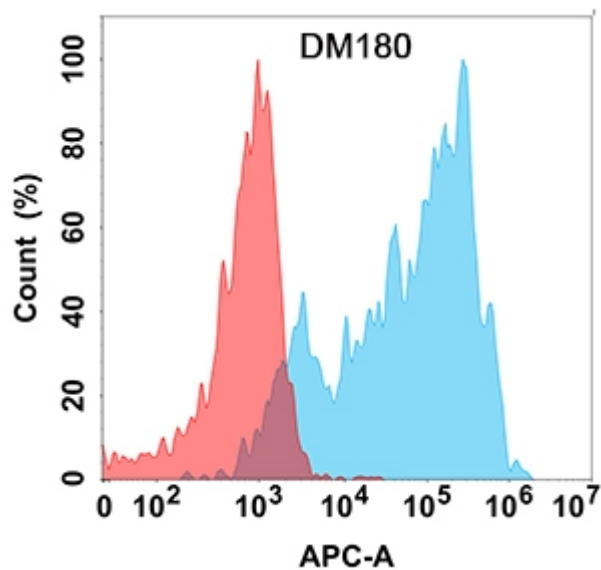


Figure 1. Flow cytometry analysis with CCR8 (DM180) on Expi293 cells transfected with human CCR8 (Blue histogram) or Expi293 transfected with irrelevant protein (Red histogram).