

CCR8 MAB (10A11 MAB)

目录: 28070

产品名称: CCR8(10A11) Monoclonal Antibody

基因符号: CC-CKR-8;CCR-8;CDW198;CKRL1;CMKBR8;CMKBRL2;CY6;GPRCY6;TER1

描述: CCR8(10A11) Monoclonal Antibody

背景: Research grade biosimilar. Not for use in therapeutic or diagnostic procedures for humans or animals.

经过测试的应用: ELISA, Flow Cyt

推荐稀释度: ELISA 1:5000-10000, Flow Cyt 1:100

种属反应性: Humanized

亚型: IgG1

纯化: Purified from cell culture supernatant by affinity chromatography

种属反应性: Human CCR8

成分: Lyophilized from sterile PBS, pH 7.4. 5 % – 8 % trehalose is added as protectants before lyophilization.

储存和运输: Store at -20°C to -80°C for 12 months in lyophilized form. After reconstitution, if not intended for use within a month, aliquot and store at -80°C (Avoid repeated freezing and thawing).

Human CCR8, hFc Tagged protein ELISA

0.1 µg Human CCR8, hFc Tagged protein per well

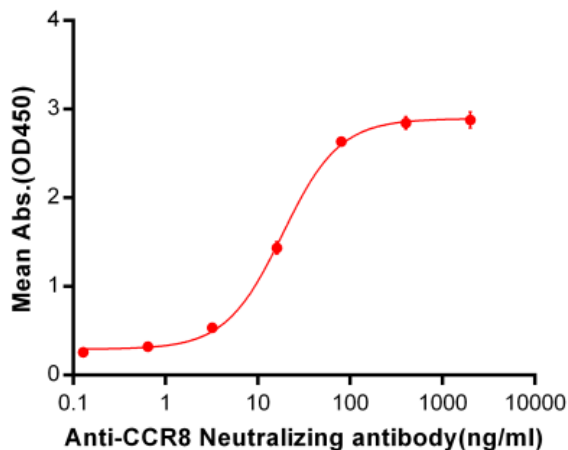


Figure 1. ELISA plate pre-coated by 1µg/ml (100µl/well) Human CCR8, hFc Tag (11761) can bind CCR8 Neutralizing antibody(28070) in a linear range of 3.2-80 ng/ml. In order to specifically detect 28070, mouse human Fab-specific antibody was used as detection antibody.

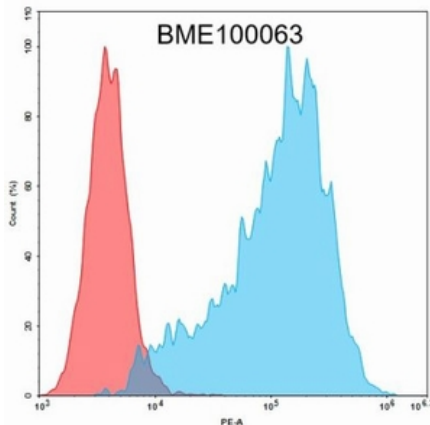


Figure 2. Flow cytometry analysis with 1 ug/ml CCR8 neutralizing antibody on 293T-CCR8 (293T cells transduced with gene for full length CCR8) Human Cell Line (Red histogram) or 293T Cell Line (Blue histogram).