

CCR2 (DMC447) IGG1 CHIMERIC MAB

目录: 28235

产品名称: CCR2(DMC447) IgG1 Chimeric Monoclonal Antibody

基因符号: CC-CKR-2; MCP-1-R; CD192

描述: CCR2 antibody(DMC447) IgG1 Chimeric Monoclonal Antibody

背景: The protein encoded by this gene is a receptor for monocyte chemoattractant protein-1; a chemokine which specifically mediates monocyte chemotaxis. Monocyte chemoattractant protein-1 is involved in monocyte infiltration in inflammatory diseases such as rheumatoid arthritis as well as in the inflammatory response against tumors. The encoded protein mediates agonist-dependent calcium mobilization and inhibition of adenylyl cyclase. This protein can also be a coreceptor with CD4 for HIV-1 infection. This gene is located in the chemokine receptor gene cluster region of chromosome 3.

经过测试的应用: Flow Cyt

推荐稀释度: Flow Cyt 1:100

种属反应性: Rabbit

亚型: Rabbit:Human Fc chimeric IgG1

纯化: Purified from cell culture supernatant by affinity chromatography

种属反应性: Human CCR2

成分: Lyophilized from sterile PBS, pH 7.4. 5 % – 8% trehalose is added as protectants before lyophilization.

储存和运输: Store at -20°C to -80°C for 12 months in lyophilized form.

After reconstitution, if not intended for use within a month, aliquot and store at -80°C (Avoid repeated freezing and thawing).

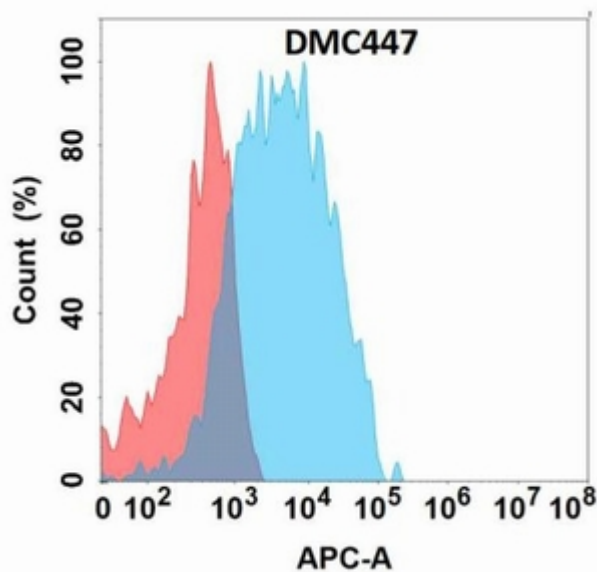


Figure 1. Flow cytometry analysis with CCR2 (DMC447) on Expi293 cells transfected with human CCR2 (Blue histogram) or Expi293 transfected with irrelevant protein (Red histogram).