

## CB1 (DM144) RABBIT MAB

目录: 28488

产品名称: CB1(DM144) Rabbit Monoclonal Antibody

基因符号: CANN6; CB-R; CB1; CB1A; CBIK5; CB1R; CNR

描述: CB1 antibody(DM144) Rabbit Monoclonal Antibody

背景: This gene encodes one of two cannabinoid receptors. The cannabinoids; principally delta-9-tetrahydrocannabinol and synthetic analogs; are psychoactive ingredients of marijuana. The cannabinoid receptors are members of the guanine-nucleotide-binding protein (G-protein) coupled receptor family; which inhibit adenylate cyclase activity in a dose-dependent; stereoselective and pertussis toxin-sensitive manner. The two receptors have been found to be involved in the cannabinoid-induced CNS effects (including alterations in mood and cognition) experienced by users of marijuana. Multiple transcript variants encoding two different protein isoforms have been described for this gene.

经过测试的应用: ELISA; Flow Cyt

推荐稀释度: ELISA 1:5000-10000; Flow Cyt 1:100

种属反应性: Rabbit

亚型: Rabbit IgG

纯化: Purified from cell culture supernatant by affinity chromatography

种属反应性: Human CB1

成分: Lyophilized from sterile PBS, pH 7.4. 5% – 8% trehalose is added as protectants before lyophilization.

储存和运输: Store at -20°C to -80°C for 12 months in lyophilized form. After reconstitution, if not intended for use within a month, aliquot and store at -80°C (Avoid repeated freezing and thawing).

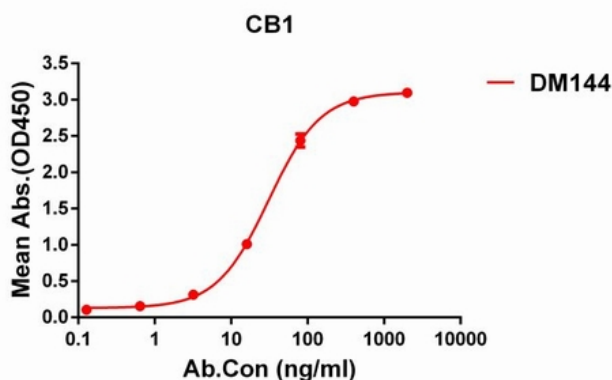


Figure 1. ELISA plate pre-coated by 1 µg/ml (100 µl/well) Human CB1 protein, hFc tagged protein 11310 can bind Rabbit CB1 monoclonal antibody (clone: DM144) in a linear range of 5-200 ng/ml.

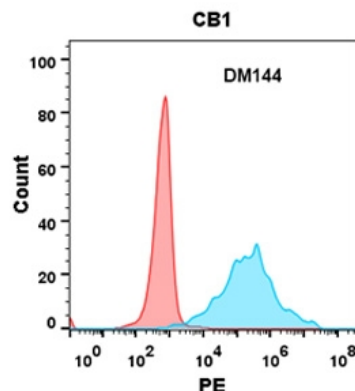


Figure 2. Flow cytometry analysis with CB1 (DM144) on Expi293 cells transfected with human CB1 (Blue histogram) or Expi293 transfected with irrelevant protein (Red histogram).