

CCL2 MAB (CARLUMAB)

目录: 28121

产品名称: CCL2(Carlumab) Monoclonal Antibody

基因符号: HC11;MCAF;MCP-1

描述: CCL2(carlumab) Monoclonal Antibody

背景: Research grade biosimilar. Not for use in therapeutic or diagnostic procedures for humans or animals.

经过测试的应用: ELISA; Flow Cyt

推荐稀释度: ELISA 1:5000-10000; Flow Cyt 1:100

种属反应性: Homo sapiens

亚型: IgG1

纯化: Purified from cell culture supernatant by affinity chromatography

种属反应性: Human CCL2

成分: Lyophilized from sterile PBS, pH 7.4. 5 % – 8 % trehalose is added as protectants before lyophilization.

储存和运输: Store at -20°C to -80°C for 12 months in lyophilized form. After reconstitution, if not intended for use within a month, aliquot and store at -80°C (Avoid repeated freezing and thawing).

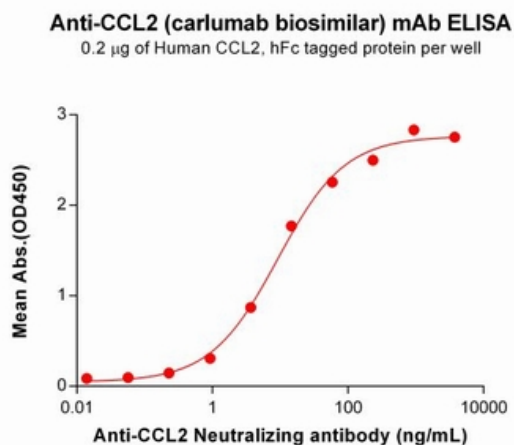


Figure 1. ELISA plate pre-coated by 2 µg/mL (100 µl/well) Human CCL2 Protein, hFc Tag (11671) can bind CCL2 Neutralizing antibody (28121) in a linear range of 0.92-234.38 ng/mL. In order to specifically detect 28121, mouse human Fab-specific antibody was used as detection antibody.

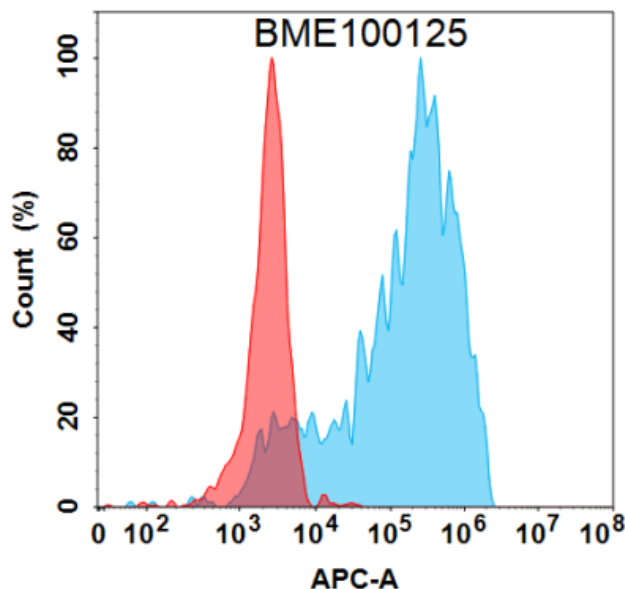


Figure 2. Flow cytometry analysis under cell membrane permeable condition with 1 µg/mL CCL2 (carlumab biosimilar) mAb (28121) on Expi293 cells transfected with Human CCL2 protein (Blue histogram) or Expi293 transfected with irrelevant protein (Red histogram).

