

BRAF(V600A)**BRAF(V600A)**

货号: 26199

基因符号: BRAF, BRAF1, RAFB1

描述: BRAF(V600A) 小鼠单克隆抗体

背景: BRAF belongs to a family of serine-threonine protein kinases. As a part of a signaling pathway known as the the RAS/MAPK pathway, it plays an important part in many cellular processes. The processes include cell proliferation, differentiation and transcriptional regulation. Mutations in the BRAF gene cause diseases. Inherited mutations in BRAF cause cardiofaciocutaneous syndrome. Acquired mutations in BRAF have been found in cancers.

免疫原: A synthetic peptide from the internal region of BRAF which includes the mutation of V600A, human origin.

经过测试的应用: ELISA, WB, IHC

推荐稀释度:

ELISA: 1:1000-1:5000

WB: 1:500-1:1000

IF: 1:50-1:100

IHC: 1:25-1:100

浓度: 1 mg/ml

种属反应性: Mouse

形式: Liquid

克隆性: Monoclonal

亚型:

纯化:: Purified from ascites

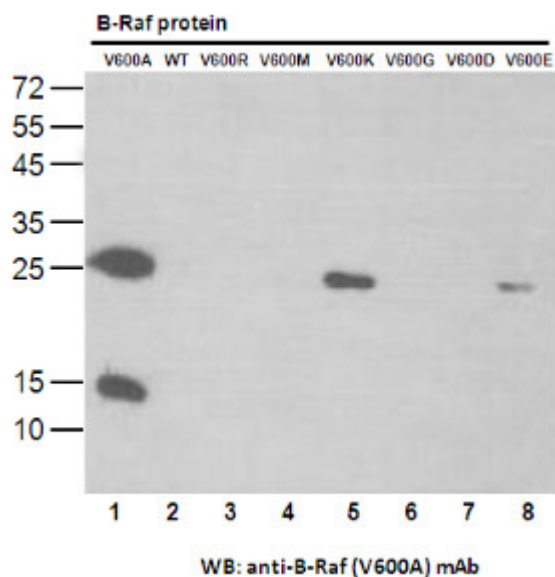
Preservative: No

成分: PBS (without Mg²⁺ and Ca²⁺), pH 7.4, 150 mM NaCl, 50% glycerol

种属反应性: Recognizes V600A mutant, but not wild type BRAF of vertebrates.

储存条件:: Store at -20°C. Avoid repeated freezing and thawing

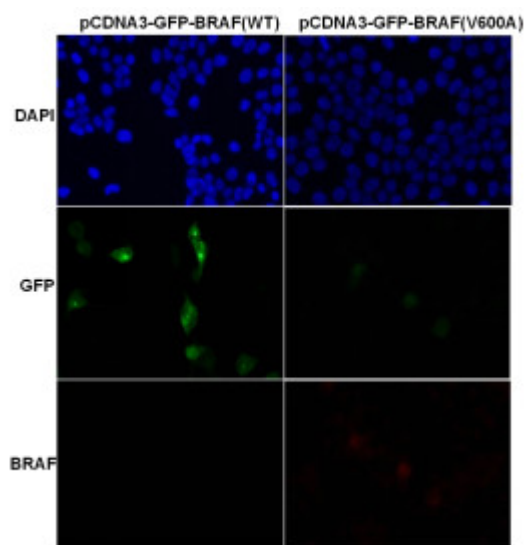
Western blot:

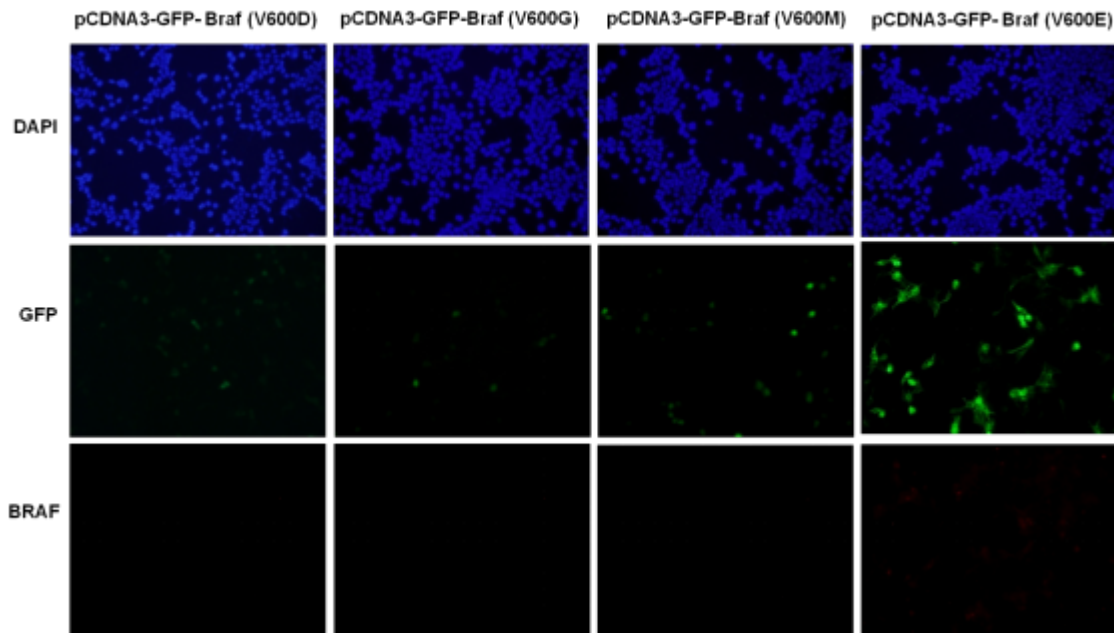


Western blot analysis of recombinant BRAF proteins.

Purified His-tagged BRAF(V600A) protein (lane 1), corresponding wild type protein (lane 2), His-tagged BRAF (V600R) protein (lane 3), His-tagged BRAF (V600M) protein (lane 4), His-tagged BRAF (V600K) protein (lane 5), His-tagged BRAF (V600G) protein (lane 6), His-tagged BRAF (V600D) protein (lane 7) and His-tagged BRAF (V600E) protein (lane 8) were blotted with BRAF(V600A) monoclonal antibody (货号26199).

Immunofluorescence:





Immunofluorescence of cells expressing BRAF proteins with BRAF(V600A) antibody. HEK293T cells were transfected with pCDNA3-GFP-BRAF (WT) plasmid, pCDNA3-GFP-BRAF(V600A) plasmid, pCDNA3-GFP-BRAF (V600D) plasmid, pCDNA3-GFP-BRAF (V600G) plasmid pCDNA3-GFP-BRAF (V600M) plasmid or pCDNA3-GFP-BRAF (V600E) plasmid, then fixed and stained with BRAF(V600A) monoclonal antibody (货号26199).