

B-RAF MAB

BRaf Antibody

货号: 26129

规格: 100 µL

基因符号: **B-Raf**

描述: B-RAF 小鼠单克隆抗体

背景: B-Raf belongs to the TKL Ser/Thr protein kinase family, RAF subfamily. It is involved in the transduction of mitogenic signals from the cell membrane to the nucleus, and may play a role in the postsynaptic responses of hippocampal neuron. B-Raf is located to nucleus and cytoplasm, and expressed in brain and testis. 免疫原: A synthetic peptide from the internal region of B-Raf, human origin.

免疫原: A synthetic peptide from the internal region of Braf (V600K), human origin.

经过测试的应用: ELISA, WB, IHC

推荐稀释度:

ELISA 1:1000-1:5000

WB 1:100-1:1000

IHC 1:50-1:100

浓度: 1 mg/ml

种属反应性: Mouse

形式: Liquid

克隆性: Monoclonal

亚型: IgG

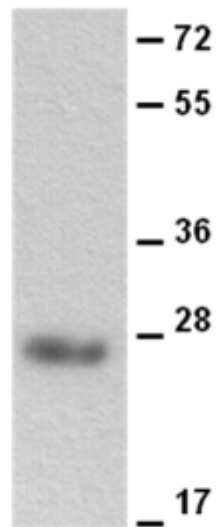
纯化:: Purified from ascites

Preservative: No

成分: PBS (without Mg^{2+} and Ca^{2+}), pH 7.4, 150 mM NaCl, 50% glycerol

种属反应性: B-Raf antibody recognizes B-Raf of vertebrates.

储存条件:: Store at -20°C. Avoid repeated freezing and thawing



WB: anti-B-Raf mAb

Western blot:

Western blot analysis of recombinant B-Raf protein.

Purified His-tagged B-Raf protein (货号10161) was blotted with B-Raf monoclonal antibody (货号26129).