

BRAF PAB

BRaf Polyclonal Antibody

货号: 21271

基因符号: B-RAF, B-RAFI, RAFB1

描述: BRaf Rabbit Polyclonal Antibody

背景: B-Raf is a member of the Raf family of Ser/Thr protein kinases. It functions downstream of Ras to regulate the MAP kinase signaling pathway. Mutations in the B-RAF gene cause diseases. Inherited mutations in B-RAF cause cardiofaciocutaneous syndrome. Acquired mutations in B-RAF have been found in cancers.

免疫原: Purified B-Raf protein, human origin.

经过测试的应用: ELISA, WB, IHC

推荐稀释度:

ELISA: 1:1000-1:5000

WB: 1:100-1:1000

IHC: 1:50-1:200

浓度: 0.1mg/ml

种属反应性: Rabbit

形式: Liquid

克隆性: Polyclonal

亚型:

纯化:: Purified from serum

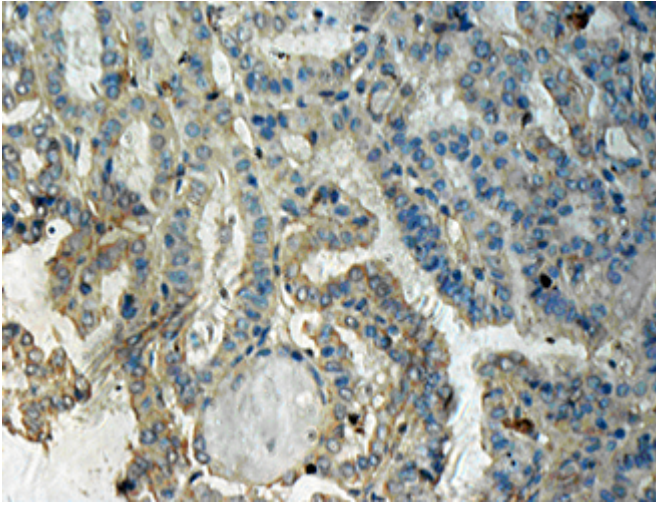
Preservative: No

成分: PBS (without Mg^{2+} and Ca^{2+}), pH 7.4, 150 mM NaCl, 50% glycerol

种属反应性: Recognizes B-Raf of vertebrates.

储存条件:: Store at $-20^{\circ}C$. Avoid repeated freezing and thawing

Immunohistochemistry:



Immunohistochemical analysis of paraffin-embedded human thyroid cancer tissue with B-Raf polyclonal antibody (货号21271). Tissue samples were fixed with formaldehyde and blocked with 1% serum for 15 min at 37 °C. Antigen retrieval was by heat mediation in citrate buffer (pH6). Samples were then incubated with primary antibody (1:50 dilution) overnight at 4°C. A HRP-conjugated Goat mouse IgG (1:50 dilution) was used as secondary antibody.