

CCR8 MAB (BMS 986340 MAB)

Cat.#: 28113

Product Name: Anti-CCR8(BMS 986340) Monoclonal Antibody

Synonyms: CC-CKR-8;CCR-8;CDw198;CKRL1;CMKBR8;CMKBRL2;CY6;GPRCY6;TER1

Description: Anti-CCR8(BMS 986340) Monoclonal Antibody

Background: Research grade biosimilar. Not for use in therapeutic or diagnostic procedures for humans or animals.

Applications: ELISA; Flow Cyt

Recommended Dilutions: ELISA 1:5000-10000; Flow Cyt 1:100

Host Species: Humanized

Isotype: IgG1

Purification: Purified from cell culture supernatant by affinity chromatography

Species Reactivity: Human CCR8

Constituents: Lyophilized from sterile PBS, pH 7.4. 5 % – 8% trehalose is added as protectants before lyophilization.

Storage & Shipping: Store at -20°C to -80°C for 12 months in lyophilized form. After reconstitution, if not intended for use within a month, aliquot and store at -80°C (Avoid repeated freezing and thawing).

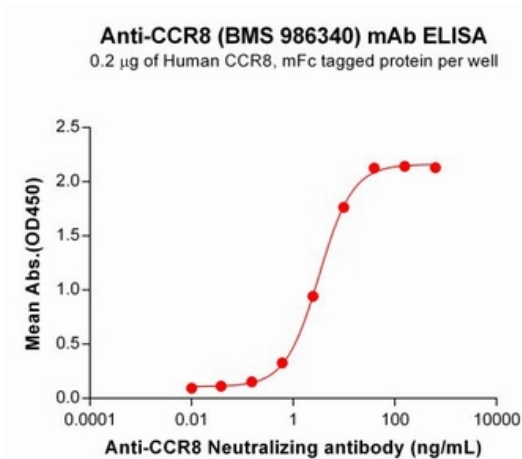


Figure 1. ELISA plate pre-coated by $2\ \mu\text{g}/\text{mL}$ ($100\ \mu\text{l}/\text{well}$) Human CCR8 Protein, mFc Tag (11772) can bind Anti-CCR8 Neutralizing antibody (28113) in a linear range of $0.15\text{--}39.06\ \text{ng}/\text{mL}$.

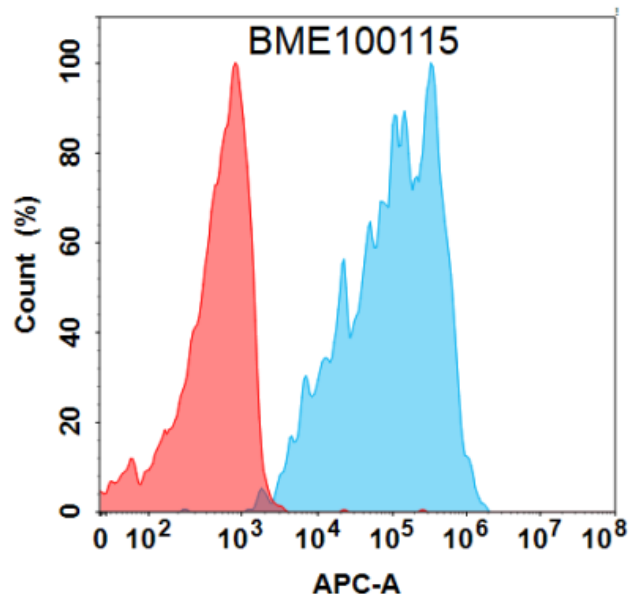


Figure 2. Flow cytometry analysis with $1\ \mu\text{g}/\text{mL}$ Anti-CCR8 (BMS 986340) mAb (28113) on Expi293 cells transfected with Human CCR8 protein (Blue histogram) or Expi293 transfected with irrelevant protein (Red histogram).