

BAG1 PAB

Bag1 Polyclonal Antibody

Cat. #: 21231

Gene Symbol: BAG1

Description: Anti-Bag1 Rabbit Polyclonal Antibody

Background: BAG family molecular chaperone regulator 1 is a protein that in humans is encoded by the BAG1 gene. It binds to oncogene BCL2, by which enhances the anti apoptotic effects of BCL2 and represents a link between growth factor receptors and anti apoptotic mechanisms. BAG gene has been implicated in age related neurodegenerative diseases as Alzheimer's. It has been demonstrated that BAG1 and BAG 3 regulate the proteasomal and lysosomal protein elimination pathways, respectively.

Immunogen: A synthetic peptide from the central region of Bag1 protein, human origin.

Applications: ELISA, WB, IHC

Recommended Dilutions:

ELISA: 1:500-1:5000

WB: 1:200-1:2000

IHC: 1:20-1:200

Concentration: 0.2 mg/ml

Host Species: Rabbit

Format: Liquid

Clonality: Polyclonal

Isotype: IgG

Purity: Purified from serum

Preservative: No

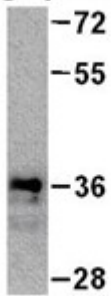
Constituents: PBS (without Mg^{2+} and Ca^{2+}), pH 7.4, 150 mM NaCl, 50% glycerol

Species Reactivity: Anti-Bag1 rabbit polyclonal antibody recognizes Bag1 from vertebrates.

Storage Conditions: Store at $-20^{\circ}C$. Avoid repeated freezing and thawing.

Western blot:

Bag1 protein



WB: Anti-Bag1 pAb

Western blot analysis of recombinant Bag1 protein.

Purified full length His-tagged Bag1 protein was blotted with Anti-Bag1 rabbit polyclonal antibody (Cat. #21231).