

B7-H6 (DM153) RABBIT MAB

目录: 28497

产品名称: B7-H6(DM153) Rabbit Monoclonal Antibody

基因符号: B7-H6;NCR3LG1;B7 Homolog 6

描述: B7-H6 antibody(DM153) Rabbit Monoclonal Antibody

背景: B7-H6 belongs to the B7 family (see MIM 605402) and is selectively expressed on tumor cells. Interaction of B7H6 with NKp30 (NCR3; MIM 611550) results in natural killer (NK) cell activation and cytotoxicity.

经过测试的应用: ELISA; Flow Cyt

推荐稀释度: ELISA 1:5000-10000; Flow Cyt 1:100

种属反应性: Rabbit

亚型: Rabbit IgG

纯化: Purified from cell culture supernatant by affinity chromatography

种属反应性: Human B7-H6

成分: Lyophilized from sterile PBS, pH 7.4. 5% - 8% trehalose is added as protectants before lyophilization.

储存和运输: Store at -20°C to -80°C for 12 months in lyophilized form. After reconstitution, if not intended for use within a month, aliquot and store at -80°C (Avoid repeated freezing and thawing).

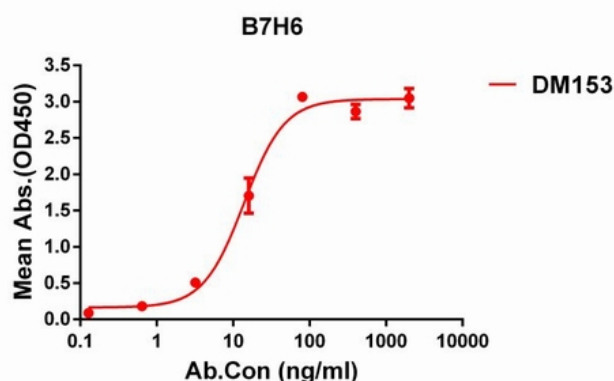


Figure 1. ELISA plate pre-coated by 1 µg/ml (100 µl/well) Human B7H6 protein, His tagged protein 11313 can bind Rabbit B7H6 monoclonal antibody (clone: DM153) in a linear range of 5-100 ng/ml.

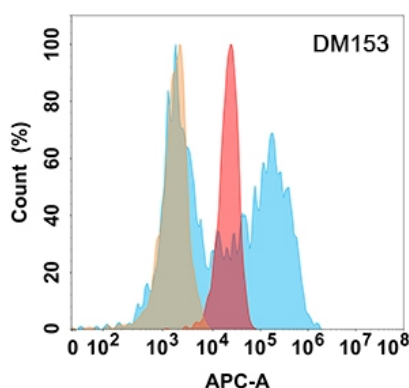


Figure 2. B7H6 protein is highly expressed on the surface of Expi293 cell membrane. Flow cytometry analysis with B7H6 (DM153) on Expi293 cells transfected with human B7H6 (Blue histogram) or Expi293 transfected with irrelevant protein (Red histogram), and Isotype antibody on Expi293 transfected with irrelevant protein (Orange histogram).