

## B7-2 (DM86) RABBIT MAB

**Cat.#:** 28413

**Product Name:** Anti-B7-2(DM86) Rabbit Monoclonal Antibody

**Synonyms:** CD86; B7-2; B70; CD28LG2; LAB72; MGC34413

**Description:** Anti-B7-2 antibody(DM86) Rabbit Monoclonal Antibody

**Background:** This gene encodes a type I membrane protein that is a member of the immunoglobulin superfamily. This protein is expressed by antigen-presenting cells; and it is the ligand for two proteins at the cell surface of T cells; CD28 antigen and cytotoxic T-lymphocyte-associated protein 4. Binding of this protein with CD28 antigen is a costimulatory signal for activation of the T-cell. Binding of this protein with cytotoxic T-lymphocyte-associated protein 4 negatively regulates T-cell activation and diminishes the immune response. Alternative splicing results in several transcript variants encoding different isoforms.

**Applications:** ELISA; Flow Cyt

**Recommended Dilutions:** ELISA 1:5000-10000; Flow Cyt 1:100

**Host Species:** Rabbit

**Isotype:** Rabbit IgG

**Purification:** Purified from cell culture supernatant by affinity chromatography

**Species Reactivity:** Human B7-2

**Constituents:** Lyophilized from sterile PBS, pH 7.4. 5% - 8% trehalose is added as protectants before lyophilization.

**Storage & Shipping:** Store at -20°C to -80°C for 12 months in lyophilized form. After reconstitution, if not intended for use within a month, aliquot and store at -80°C (Avoid repeated freezing and thawing).

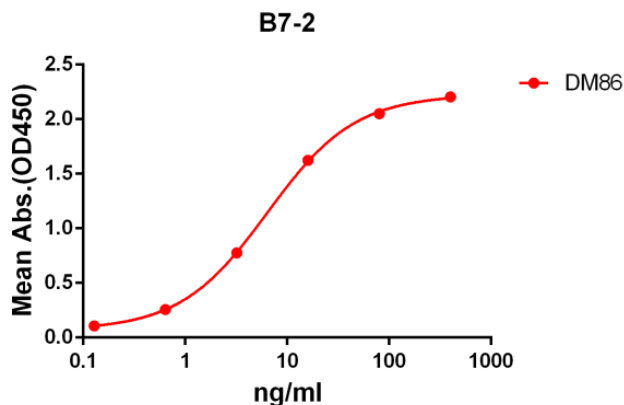


Figure 1. ELISA plate pre-coated by 2 µg/ml (100 µl/well) Human B7-2 protein, mFc-His tagged protein 11162 can bind Rabbit anti-B7-2 monoclonal antibody (clone: DM86) in a linear range of 1-100 ng/ml.

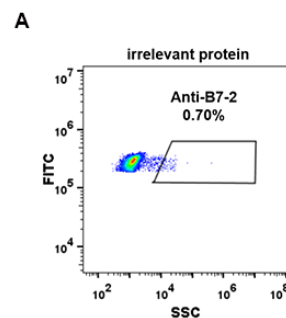


Figure 2. Expi 293 cell line transfected with irrelevant protein (A) and human B7-2 (B) were surface stained with Rabbit anti-B7-2 monoclonal antibody 1 µg/ml (clone: DM86) followed by Alexa 488-conjugated anti-rabbit IgG secondary antibody.