

AXL (DM158) RABBIT MAB

目录: 28502

产品名称: AXL(DM158) Rabbit Monoclonal Antibody

基因符号: AXL;UFO

描述: AXL antibody(DM158) Rabbit Monoclonal Antibody

背景: The protein encoded by this gene is a member of the Tyro3-Axl-Mer (TAM) receptor tyrosine kinase subfamily. The encoded protein possesses an extracellular domain which is composed of two immunoglobulin-like motifs at the N-terminal; followed by two fibronectin type-III motifs. It transduces signals from the extracellular matrix into the cytoplasm by binding to the vitamin K-dependent protein growth arrest-specific 6 (Gas6). This gene may be involved in several cellular functions including growth; migration; aggregation and inflammation in multiple cell types. Alternative splicing results in multiple transcript variants of this gene.

经过测试的应用: ELISA; Flow Cyt

推荐稀释度: ELISA 1:5000-10000; Flow Cyt 1:100

种属反应性: Rabbit

亚型: Rabbit IgG

纯化: Purified from cell culture supernatant by affinity chromatography

种属反应性: Human AXL

成分: Lyophilized from sterile PBS, pH 7.4. 5 % – 8% trehalose is added as protectants before lyophilization.

储存和运输: Store at -20°C to -80°C for 12 months in lyophilized form. After reconstitution, if not intended for use within a month, aliquot and store at -80°C (Avoid repeated freezing and thawing).

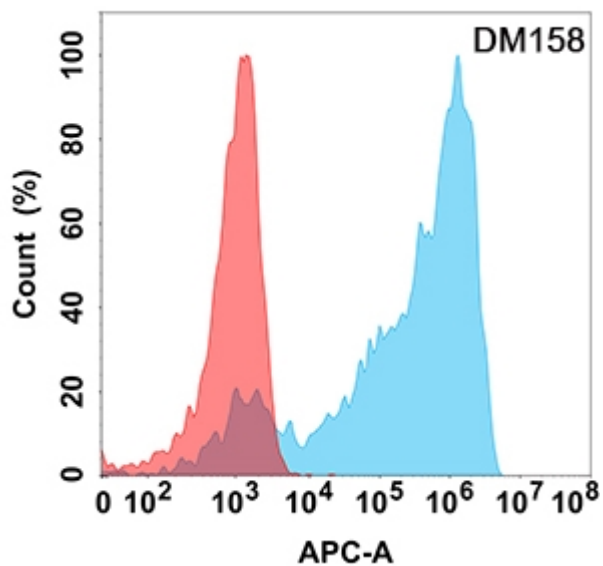


Figure 1. Flow cytometry analysis with AXL (DM158) on Expi293 cells transfected with human AXL (Blue histogram) or Expi293 transfected with irrelevant protein (Red histogram).