

## ARL3 MAB

### Arl3 Monoclonal Antibody

**Cat. #:** 26070

**Gene Symbol:** ARL3

**Description:** Anti-Arl3 Mouse Monoclonal Antibody

**Background:** Arl3 (Arf-like 3) is an Arf family protein. Arl3 binds microtubules to alter specific aspects of cytokinesis. It has been proposed that retinitis pigmentosa 2 functions in concert with Arl3 to link the cell membrane and the cytoskeleton in photoreceptors as part of the cell signaling or vesicular transport machinery.

**Immunogen:** : Recombinant Arl3 protein

**Applications:** ELISA, WB, IHC, IP

**Recommended Dilutions:**

ELISA: 1:100–1:5000

WB: 1:100–1:2000

IHC: 1:10–1:100

**Concentration:** 1 mg/ml

**Host Species:** Mouse

**Format:** Liquid

**Clonality:** Monoclonal

**Isotype:** IgG

**Purity:** Purified from ascites

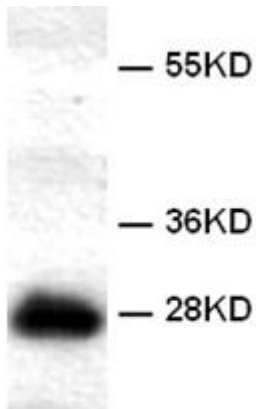
**Preservative:** No

**Constituents:** PBS (without  $Mg^{2+}$  and  $Ca^{2+}$ ), pH 7.4, 150 mM NaCl, 50% glycerol

**Species Reactivity:** Arl3 antibody recognizes Arl3 from vertebrates.

**Storage Conditions:** Store at  $-20^{\circ}C$ . Avoid repeated freezing and thawing

## Western blot:



WB: Anti-Arl3 mAb

### **Western blot analysis of recombinant Arl3 proteins.**

Purified his-tagged Arl3 protein (cat. # 10152) was blotted with anti-Arl3 monoclonal antibody (cat. # 26070).