

ARL3-GTP

Anti-Arl3GTP Mouse Monoclonal Antibody

Cat. #: 26925

Gene Symbol: ARL3

Description: Anti-Arl3-GTP Mouse Monoclonal Antibody

Background: Arl3 (Arf-like 3) is an Arf family protein. Arl3 binds microtubules to alter specific aspects of cytokinesis. It has been proposed that retinitis pigmentosa 2 functions in concert with Arl3 to link the cell membrane and the cytoskeleton in photoreceptors as part of the cell signaling or vesicular transport machinery.

Immunogen: Recombinant Arl3 protein (active form)

Applications: IP, IHC and IF (**Not applicable for WB since SDS denatures Arl3 GTPase**)

Recommended Dilutions:

IP: 1 µg for 1~2 mg total cellular proteins

IHC, IF: 1:50-1:250

Concentration: 1 mg/ml

Host Species: Mouse

Format: Liquid

Clonality: Monoclonal

Isotype: IgG

Purity: Purified from ascites

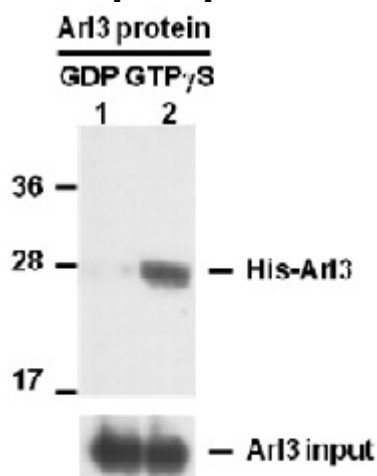
Preservative: No

Constituents: PBS (without Mg²⁺ and Ca²⁺), pH 7.4, 150 mM NaCl, 50% glycerol

Species Reactivity: Arl3 antibody recognizes active Arl3-GTP from vertebrates.

Storage Conditions: Store at -20°C. Avoid repeated freezing and thawing

Immunoprecipitation/Western blot:



IP: anti-active Arl3 mAb

IB: anti-Arl3 mAb

Arl3 Activation Assay.

Purified His-tagged Arl3 proteins (Cat. #10152) were immunoprecipitated with the anti-active Arl3 monoclonal antibody (Cat. #26925) after treated with GDP (lane 1) or GTP γ S (lane 2), and was blotted with anti-Arl3 monoclonal antibody (Cat. #21070). Input controls are shown in the bottom panel.