

ARL1-GTP

ArllGTP 小鼠单克隆抗体

货号: 26924

规格: 30 μ L

基因符号: Arll

描述: Arll-GTP 小鼠单克隆抗体

背景: Arll (Arf-like 1) localizes to the Golgi complex, where it is believed to recruit effector proteins to the trans-Golgi network. Golgi-localized proteins golgin-97 and golgin-245 have been shown as Arll effectors. Additional Arll effectors include the GARP (Golgi-associated retrograde protein)/VFT (Vps53) vesicle-tethering complex and Arfaptin 2. In *Drosophila* zygotes, mutation of Arll is lethal.

免疫原: Recombinant Arll protein (active form)

经过测试的应用: **IP, IHC and IF (Not applicable for WB since SDS denatures Arll GTPase)**

推荐稀释度:

IP: 1 μ g for 1~2 mg total cellular proteins

IHC, IF: 1:50~1:250

浓度: 1 mg/ml

种属反应性: Mouse

形式: Liquid

克隆性: Monoclonal

亚型: IgG

纯化:: Purified from ascites

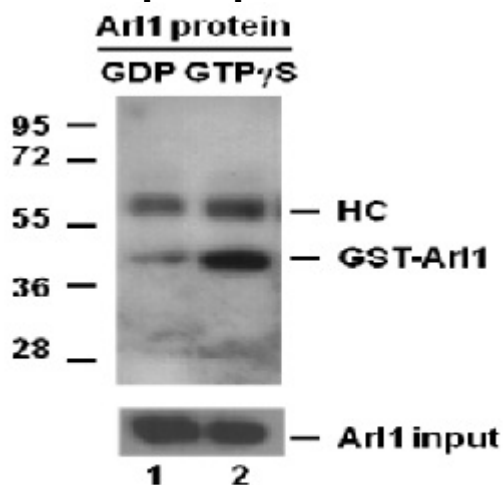
Preservative: No

成分: PBS (without Mg^{2+} and Ca^{2+}), pH 7.4, 150 mM NaCl, 50% glycerol

种属反应性: Arll antibody recognizes active Arll-GTP from vertebrates.

储存条件:: Store at $-20^{\circ}C$. Avoid repeated freezing and thawing

Immunoprecipitation/Western blot:



IP: anti-active Arl1 mAb

IB: anti-Arl1 mAb

Arl1 Activation Assay

Purified GST-tagged Arl1 proteins (货号10136) were immunoprecipitated with the active Arl1 monoclonal antibody (货号 26924) after treated with GDP (lane 1) or GTP γ S (lane 2), and was blotted with Arl1 monoclonal antibody (货号26056). Arl1 protein input control is shown in the bottom panel.