

HIS TAG MAB

Anti-HIS Tag Mouse Monoclonal Antibody

Cat. #: 28004

Size: 100 µL

Symbol: His-tag

Description: Anti-HIS Tag Mouse Monoclonal Antibody

Background: The His-tag antibody recognizes any protein containing continuous 6 or more histidine residues.

Immunogen: His synthetic peptide

Applications: ELISA, WB, IF, IHC

Recommended Dilutions:

ELISA 1:2000-1:5000

WB 1:1000-1:5000

IF 1:100-1:200

Concentration: 1 mg/ml

Host Species: Mouse

Format: Liquid

Clonality: Monoclonal

Isotype: IgG

Purity: Purified from ascites

Preservative: No

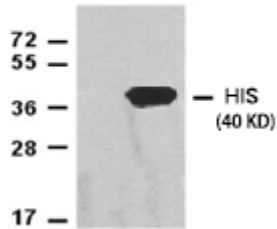
Constituents: PBS (without Mg²⁺ and Ca²⁺), pH 7.4, 150 mM NaCl, 50% glycerol

Species Reactivity: Recognizes any protein containing continuous 6 histidine residues.

Storage Conditions: Store at -20°C. Avoid repeated freezing and thawing

Western blot:

HIS protein



Western blot: Recombinant HIS tag fusion protein was diluted with HIS mouse monoclonal antibody (1:1000), and the protein loading amount was 50ng, and Western blot analysis was performed.