

ZYX RABBIT MAB

Cat.#: N263102

Product Name: Anti-ZYX Rabbit Monoclonal Antibody

Synonyms: ESP2; HED2; ZYX; Zyxin2

UNIPROT ID: Q15942

Background: Zyxin binds alpha-actinin and the CRP proteins and is implicated in the regulation and modulation of actin filaments organization, cell adhesion, cell motility, mitosis, and signal transduction. Zyxin may shuttle between focal adhesion plaques and the nucleus. It has been suggested that zyxin is involved in gene transcription by its association with transcription factors in the nucleus.

Immunogen: A synthetic peptide of human Zyxin

Applications: WB,IHC-F,IHC-P,ICC/IF,IP

Recommended Dilutions: WB: 1/500-1/1000 IHC: 1/50-1/100 IF: 1/50-1/200 IP: 1/20

Host Species: Rabbit

Clonality: Rabbit Monoclonal

Clone ID: R01-8C8

MW: Calculated MW: 61 kDa; Observed MW: 78 kDa

Isotype: IgG

Purification: Affinity Purified

Species Reactivity: Human,Rat

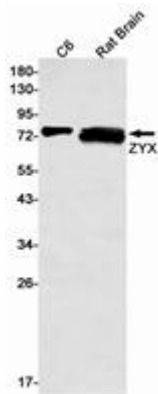
Conjugation: Unconjugated

Modification: Unmodified

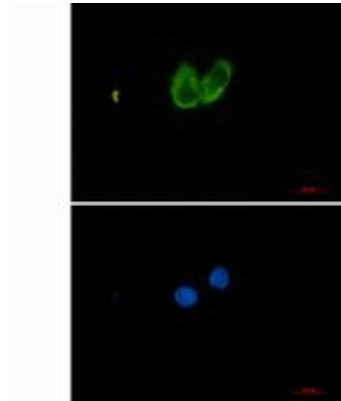
Constituents: PBS (without Mg²⁺ and Ca²⁺), pH 7.3 containing 50% glycerol, 0.5% BSA and 0.02% sodium azide

Research Areas: Neuroscience

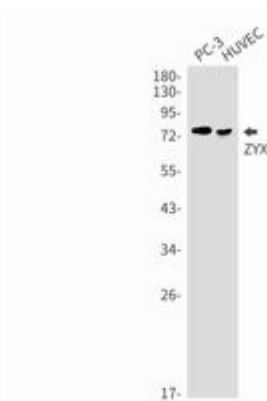
Storage & Shipping: Store at -20°C. Avoid repeated freezing and thawing



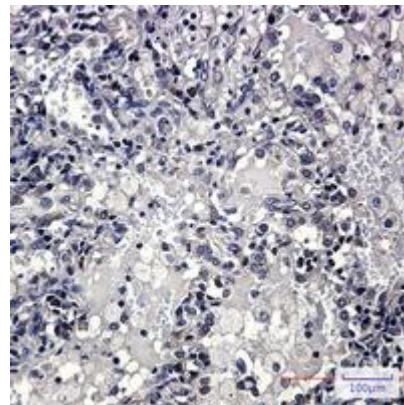
Western blot analysis of ZYX in C6, rat Brain lysates using ZYX antibody



Immunocytochemistry analysis of ZYX (green) in Hela using ZYX antibody, and DAPI (blue).



Western blot analysis of ZYX in PC-3, HUVEC lysates using ZYX antibody.



Immunohistochemistry analysis of paraffin-embedded Human lung cancer using Zyxin antibody. High-pressure and temperature Sodium Citrate pH 6.0 was used for antigen retrieval.