

ZSCAN29 RABBIT PAB

Cat.#: S212000

Product Name: Anti-ZSCAN29 Rabbit Polyclonal Antibody

Synonyms: ZNF690; Zfp690

UNIPROT ID: Q8IWIY8 (Gene Accession - BC109271)

Background: May be involved in transcriptional regulation.

Immunogen: Fusion protein of human ZSCAN29

Applications: ELISA, IHC

Recommended Dilutions: IHC: 25-100; ELISA: 5000-10000

Host Species: Rabbit

Clonality: Rabbit Polyclonal

Isotype: Immunogen-specific rabbit IgG

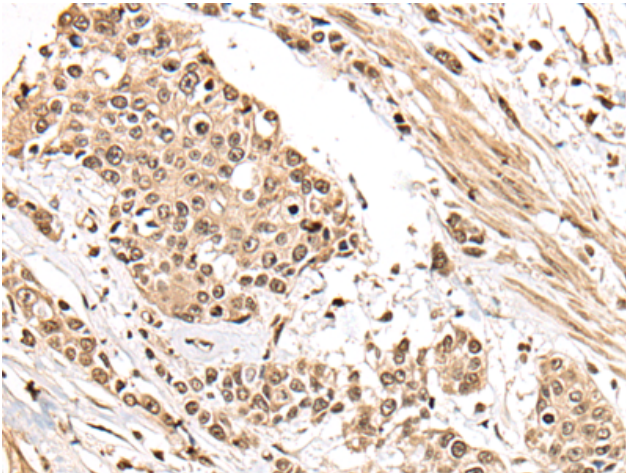
Purification: Antigen affinity purification

Species Reactivity: Human

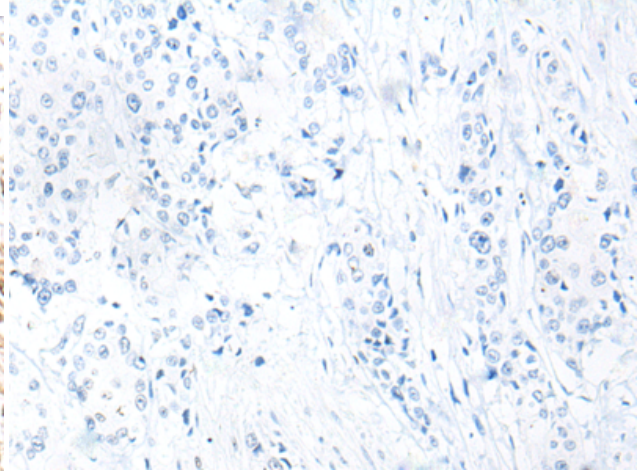
Constituents: PBS (without Mg²⁺ and Ca²⁺), pH 7.4, 150 mM NaCl, 0.05% Sodium Azide and 40% glycerol

Research Areas: Epigenetics and Nuclear Signaling

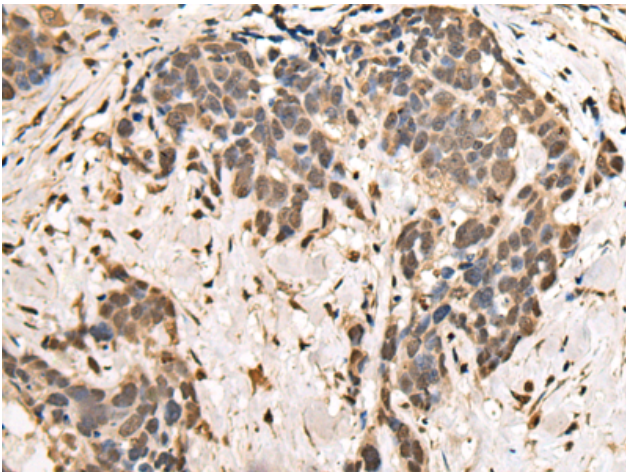
Storage & Shipping: Store at -20°C. Avoid repeated freezing and thawing



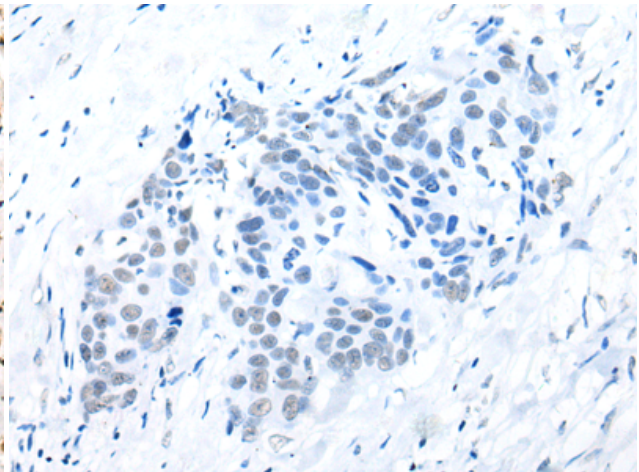
Immunohistochemistry analysis of paraffin embedded Human prostate cancer tissue using 212000(ZSCAN29 Antibody) at a dilution of 1/30(Nucleus).



In comparison with the IHC on the left, the same paraffin-embedded Human prostate cancer tissue is first treated with the fusion protein and then with 212000(Anti-ZSCAN29 Antibody) at dilution 1/30.



The image on the left is immunohistochemistry of paraffin-embedded Human thyroid cancer tissue using 212000(Anti-ZSCAN29 Antibody) at a dilution of 1/30.



In comparison with the IHC on the left, the same paraffin-embedded Human thyroid cancer tissue is first treated with fusion protein and then with D124042(Anti-ZSCAN29 Antibody) at dilution 1/30.