

ZPBP RABBIT PAB

Cat.#: S218259

Product Name: Anti-ZPBP Rabbit Polyclonal Antibody

Synonyms: ZBPPI

UNIPROT ID: Q9BS86 (Gene Accession - BC005223)

Background: ZPBP is one of several proteins that are thought to participate in secondary binding between acrosome-reacted sperm and the egg-specific extracellular matrix, the zona pellucida (McLeskey et al., 1998 [PubMed 9378618]). May be implicated in gamete interaction during fertilization.

Immunogen: Fusion protein of human ZPBP

Applications: ELISA, WB, IHC

Recommended Dilutions: IHC: 25-100;WB: 500-2000;ELISA: 5000-10000

Host Species: Rabbit

Clonality: Rabbit Polyclonal

Isotype: Immunogen-specific rabbit IgG

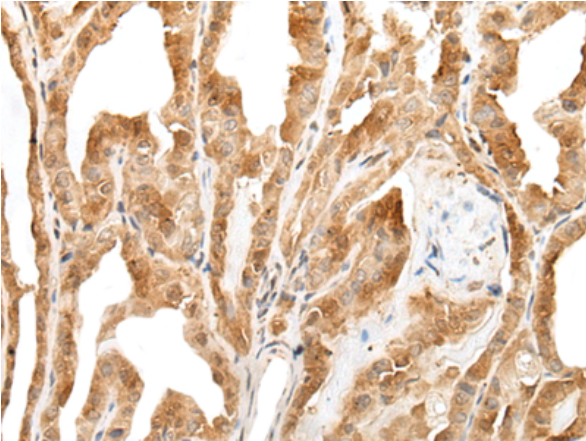
Purification: Antigen affinity purification

Species Reactivity: Human, Mouse

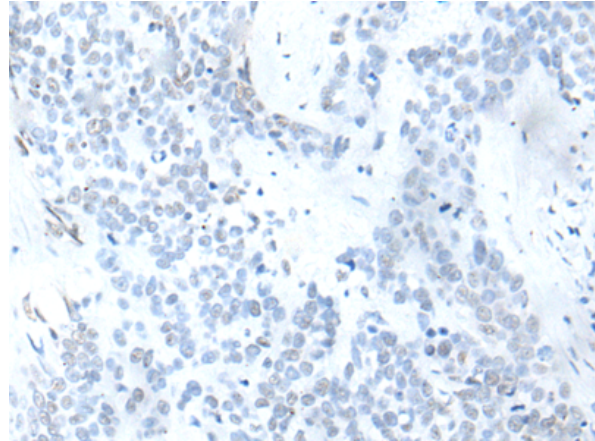
Constituents: PBS (without Mg²⁺ and Ca²⁺), pH 7.4, 150 mM NaCl, 0.05% Sodium Azide and 40% glycerol

Research Areas: Developmental Biology

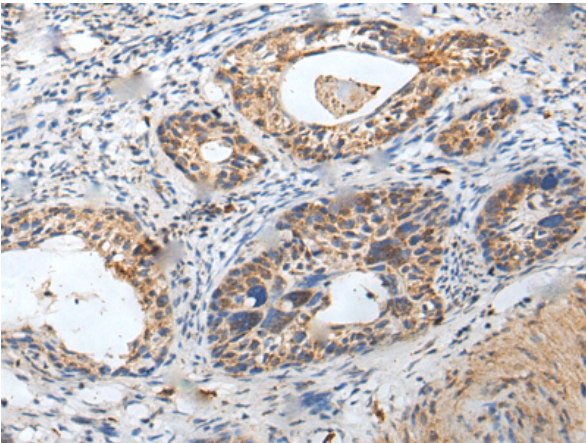
Storage & Shipping: Store at -20°C. Avoid repeated freezing and thawing



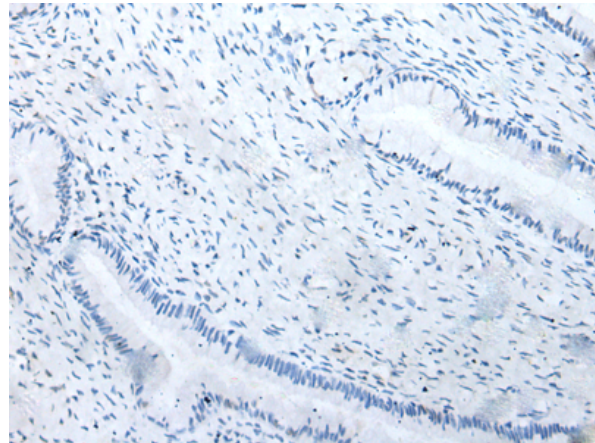
Immunohistochemistry analysis of paraffin embedded Human thyroid cancer tissue using 218259(ZPBP Antibody) at a dilution of 1/30(Secreted).



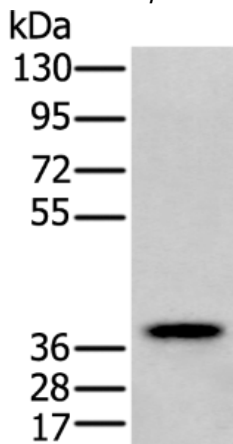
In comparison with the IHC on the left, the same paraffin-embedded Human thyroid cancer tissue is first treated with the fusion protein and then with 218259(Anti-ZPBP Antibody) at dilution 1/30.



The image on the left is immunohistochemistry of paraffin-embedded Human cervical cancer tissue using 218259(Anti-ZPBP Antibody) at a dilution of 1/30.



In comparison with the IHC on the left, the same paraffin-embedded Human cervical cancer tissue is first treated with fusion protein and then with D224048(Anti-ZPBP Antibody) at dilution 1/30.



Gel: 8%SDS-PAGE, Lysate: 40 µg;
Lane: Human testis tissue lysate;
Primary antibody: 218259(ZPBP Antibody) at dilution 1/250;
Secondary antibody: Goat anti rabbit IgG at 1/8000 dilution;
Exposure time: 20 seconds



Product Description

Pioneering GTPase and Oncogene Product Development since 2010
