

## ZNRD1 RABBIT PAB

**Cat.#:** S218124

**Product Name:** Anti-ZNRD1 Rabbit Polyclonal Antibody

**Synonyms:** TEX6; ZR14; HTEX6; Rpa12; hZR14; HTEX-6; TCTEX6; tctex-6

**UNIPROT ID:** Q9PIU0 (Gene Accession - BC050608 )

**Background:** This gene encodes a DNA-directed RNA polymerase I subunit. The encoded protein contains two potential zinc-binding motifs and may play a role in regulation of cell proliferation. The encoded protein may be involved in cancer and human immunodeficiency virus progression. Alternative splicing results in multiple transcript variants.

**Immunogen:** Full length fusion protein

**Applications:** ELISA, IHC

**Recommended Dilutions:** IHC: 20-100; ELISA: 5000-10000

**Host Species:** Rabbit

**Clonality:** Rabbit Polyclonal

**Isotype:** Immunogen-specific rabbit IgG

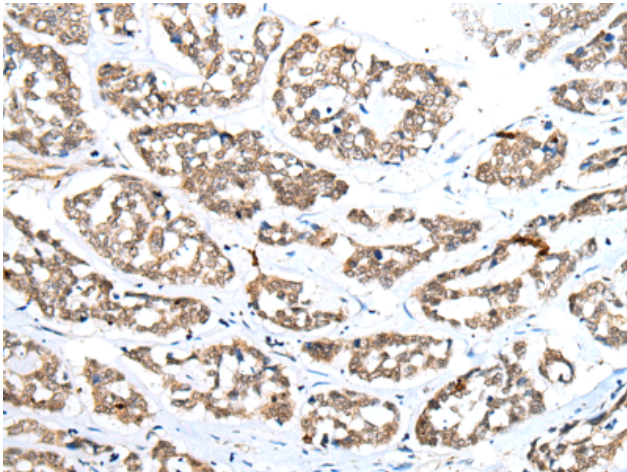
**Purification:** Antigen affinity purification

**Species Reactivity:** Human, Mouse, Rat

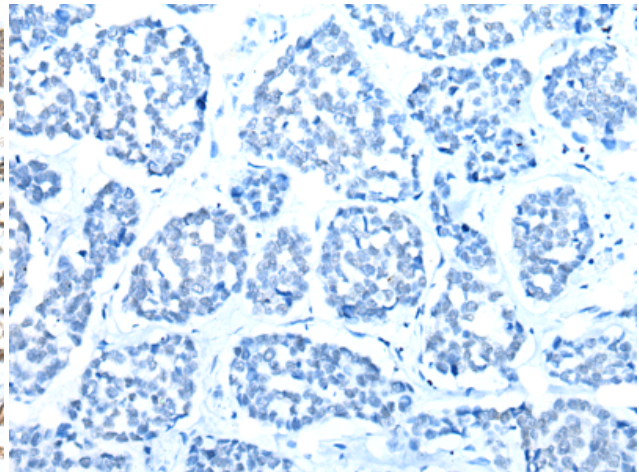
**Constituents:** PBS (without Mg<sup>2+</sup> and Ca<sup>2+</sup>), pH 7.4, 150 mM NaCl, 0.05% Sodium Azide and 40% glycerol

**Research Areas:** Epigenetics and Nuclear Signaling

**Storage & Shipping:** Store at -20°C. Avoid repeated freezing and thawing



Immunohistochemistry analysis of paraffin embedded Human esophagus cancer tissue using 218124(ZNRD1 Antibody) at a dilution of 1/25(Nucleus).



In comparison with the IHC on the left, the same paraffin-embedded Human esophagus cancer tissue is first treated with the fusion protein and then with 218124(Anti-ZNRD1 Antibody) at dilution 1/25.