

## ZNF787 RABBIT PAB

**Cat.#:** S221518

**Product Name:** Anti-ZNF787 Rabbit Polyclonal Antibody

**Synonyms:** TIP20

**UNIPROT ID:** Q6DD87 (Gene Accession - NP\_001002836 )

**Background:** May be involved in transcriptional regulation.

**Immunogen:** Synthetic peptide of human ZNF787

**Applications:** ELISA, IHC

**Recommended Dilutions:** IHC: 20-100; ELISA: 5000-10000

**Host Species:** Rabbit

**Clonality:** Rabbit Polyclonal

**Isotype:** Immunogen-specific rabbit IgG

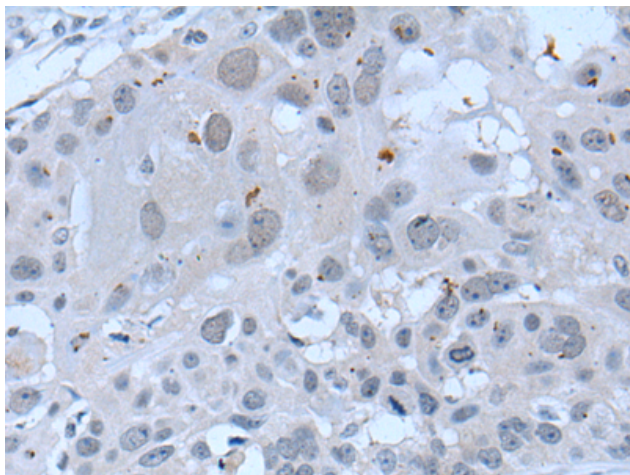
**Purification:** Antigen affinity purification

**Species Reactivity:** Human, Mouse

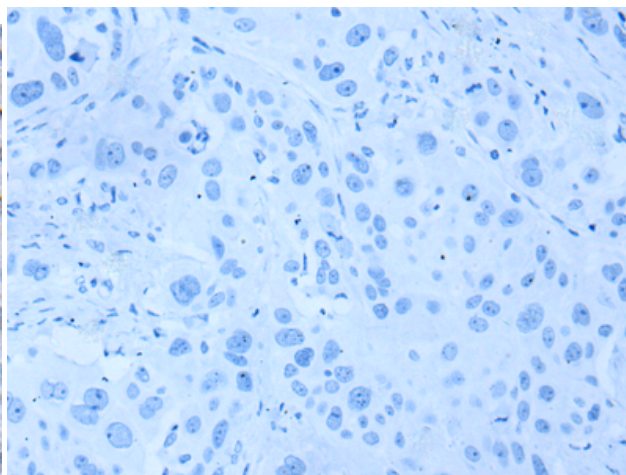
**Constituents:** PBS (without Mg<sup>2+</sup> and Ca<sup>2+</sup>), pH 7.4, 150 mM NaCl, 0.05% Sodium Azide and 40% glycerol

**Research Areas:** Epigenetics and Nuclear Signaling

**Storage & Shipping:** Store at -20°C. Avoid repeated freezing and thawing



Immunohistochemistry analysis of paraffin embedded Human esophagus cancer tissue using 221518(ZNF787 Antibody) at a dilution of 1/35(Nucleus).



In comparison with the IHC on the left, the same paraffin-embedded Human esophagus cancer tissue is first treated with the synthetic peptide and then with 221518(Anti-ZNF787 Antibody) at dilution 1/35.