

## ZNF703 RABBIT PAB

**Cat.#:** S221517

**Product Name:** Anti-ZNF703 Rabbit Polyclonal Antibody

**Synonyms:** NLZ1; ZPO1; ZEPP01; ZNF503L

**UNIPROT ID:** Q9H7S9 (Gene Accession - NP\_079345 )

**Background:** ZNF703 (zinc finger protein 703) is a 590 amino acid nuclear protein that contains one C2H2-type zinc finger and is thought to play a role in transcriptional regulation. Multiple isoforms of ZNF703 exist due to alternative splicing events. The gene encoding ZNF703 maps to human chromosome 8, which consists of nearly 146 million base pairs, houses more than 800 genes and is associated with a variety of diseases and malignancies. Schizophrenia, bipolar disorder, Trisomy 8, Pfeiffer syndrome, congenital hypothyroidism, Waardenburg syndrome and some leukemias and lymphomas are thought to occur as a result of defects in specific genes that map to chromosome 8.

**Immunogen:** Synthetic peptide of human ZNF703

**Applications:** ELISA, IHC

**Recommended Dilutions:** IHC: 30-150; ELISA: 5000-10000

**Host Species:** Rabbit

**Clonality:** Rabbit Polyclonal

**Isotype:** Immunogen-specific rabbit IgG

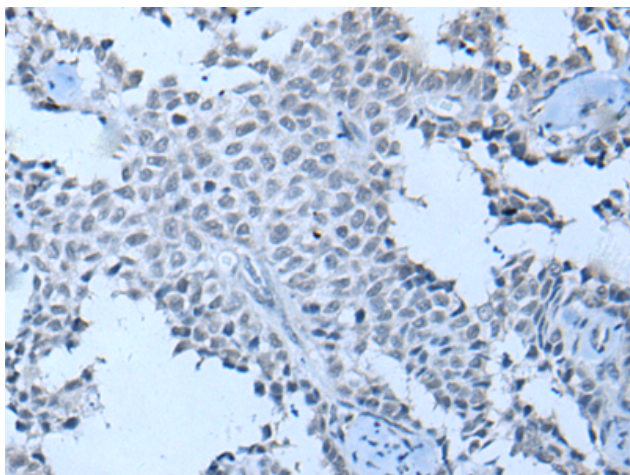
**Purification:** Antigen affinity purification

**Species Reactivity:** Human, Mouse

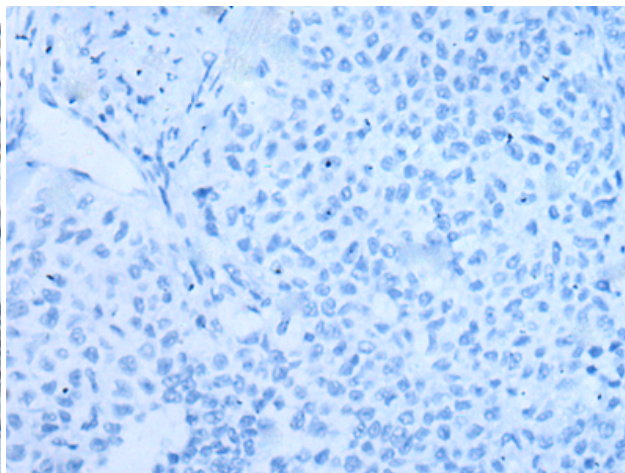
**Constituents:** PBS (without Mg<sup>2+</sup> and Ca<sup>2+</sup>), pH 7.4, 150 mM NaCl, 0.05% Sodium Azide and 40% glycerol

**Research Areas:** Epigenetics and Nuclear Signaling

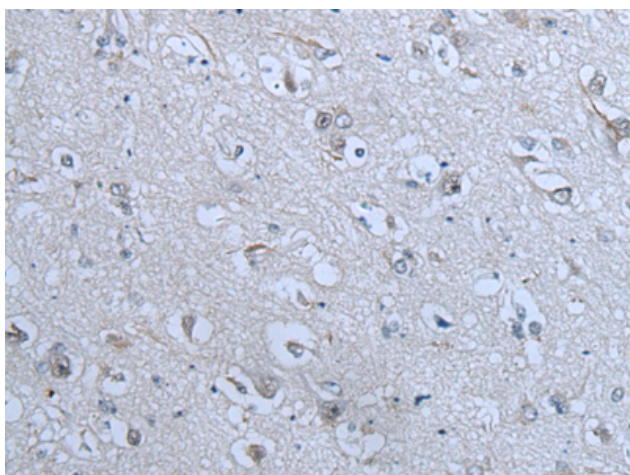
**Storage & Shipping:** Store at -20°C. Avoid repeated freezing and thawing



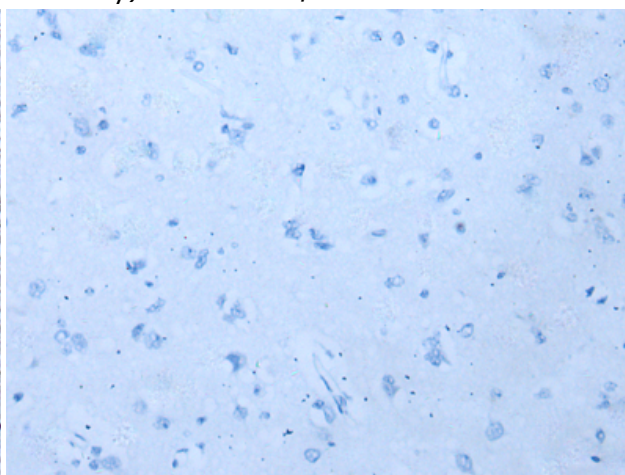
Immunohistochemistry analysis of paraffin embedded Human ovarian cancer tissue using 221517 (ZNF703 Antibody) at a dilution of 1/55 (Nucleus).



In comparison with the IHC on the left, the same paraffin-embedded Human ovarian cancer tissue is first treated with the synthetic peptide and then with 221517 (Anti-ZNF703 Antibody) at dilution 1/55.



The image on the left is immunohistochemistry of paraffin-embedded Human brain tissue using 221517 (Anti-ZNF703 Antibody) at a dilution of 1/55.



In comparison with the IHC on the left, the same paraffin-embedded Human brain tissue is first treated with synthetic peptide and then with D263145 (Anti-ZNF703 Antibody) at dilution 1/55.