

ZNF688 RABBIT PAB

Cat.#: S219042

Product Name: Anti-ZNF688 Rabbit Polyclonal Antibody

Synonyms:

UNIPROT ID: P0C7X2 (Gene Accession - BC018997)

Background: May be involved in transcriptional regulation.

Immunogen: Fusion protein of human ZNF688

Applications: ELISA, WB, IHC

Recommended Dilutions: IHC: 50–200;WB: 500–2000;ELISA: 5000–10000

Host Species: Rabbit

Clonality: Rabbit Polyclonal

Isotype: Immunogen-specific rabbit IgG

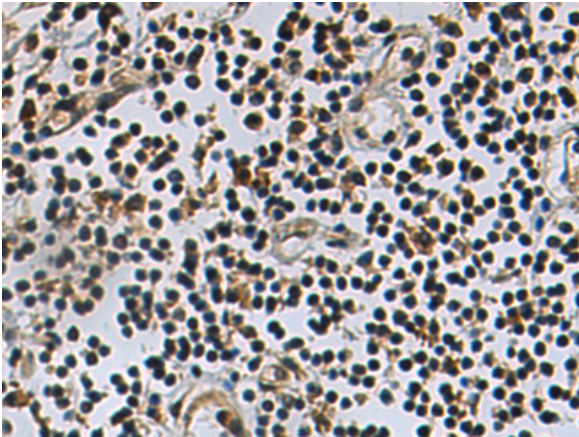
Purification: Antigen affinity purification

Species Reactivity: Human

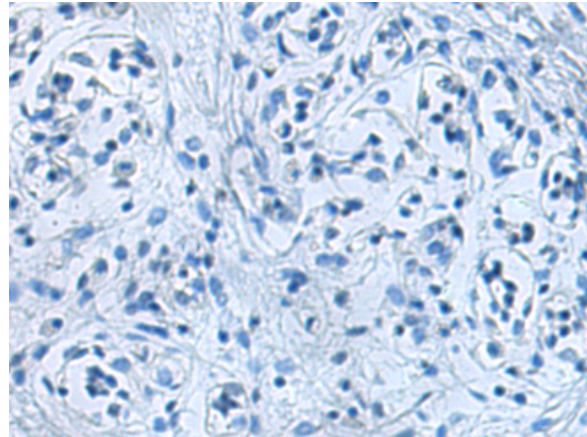
Constituents: PBS (without Mg²⁺ and Ca²⁺), pH 7.4, 150 mM NaCl, 0.05% Sodium Azide and 40% glycerol

Research Areas: Epigenetics and Nuclear Signaling

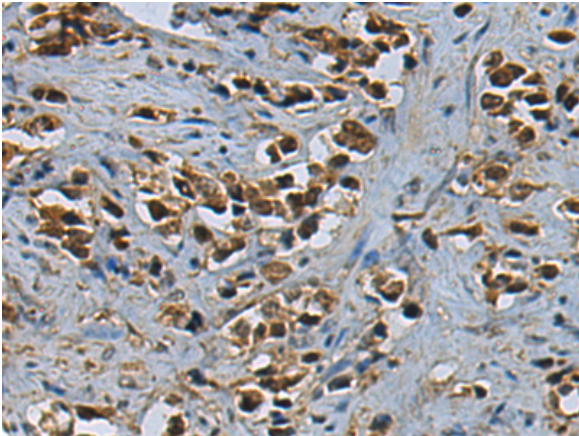
Storage & Shipping: Store at -20°C. Avoid repeated freezing and thawing



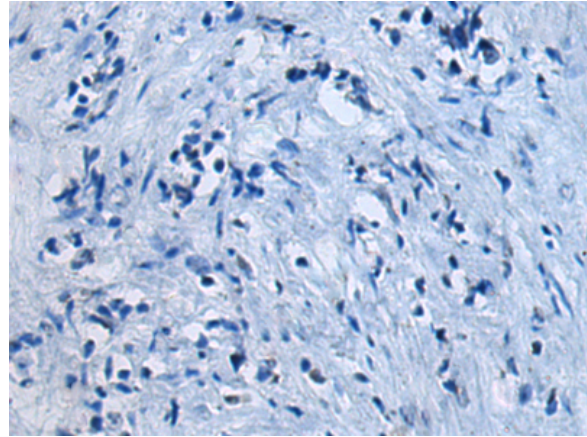
Immunohistochemistry analysis of paraffin embedded Human breast cancer tissue using 219042(ZNF688 Antibody) at a dilution of 1/90(Nucleus).



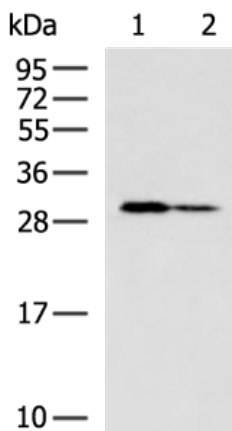
In comparison with the IHC on the left, the same paraffin-embedded Human breast cancer tissue is first treated with the fusion protein and then with 219042(Anti-ZNF688 Antibody) at dilution 1/90.



The image on the left is immunohistochemistry of paraffin-embedded Human prostate cancer tissue using 219042(Anti-ZNF688 Antibody) at a dilution of 1/90.



In comparison with the IHC on the left, the same paraffin-embedded Human prostate cancer tissue is first treated with fusion protein and then with D225701(Anti-ZNF688 Antibody) at dilution 1/90.



Gel: 12%SDS-PAGE, Lysate: 40 µg;
Lane 1-2: A172 and 231 cell lysates;
Primary antibody: 219042(ZNF688 Antibody) at dilution 1/700;
Secondary antibody: HRP-conjugated Goat anti rabbit IgG at 1/5000 dilution;
Exposure time: 10 seconds



Product Description

Pioneering GTPase and Oncogene Product Development since 2010
