

ZNF560 RABBIT PAB

Cat.#: S221991

Product Name: Anti-ZNF560 Rabbit Polyclonal Antibody

Synonyms:

UNIPROT ID: Q96MR9 (Gene Accession - NP_689689)

Background: May be involved in transcriptional regulation.

Immunogen: Synthetic peptide of human ZNF560

Applications: ELISA, IHC

Recommended Dilutions: IHC: 40-200; ELISA: 5000-10000

Host Species: Rabbit

Clonality: Rabbit Polyclonal

Isotype: Immunogen-specific rabbit IgG

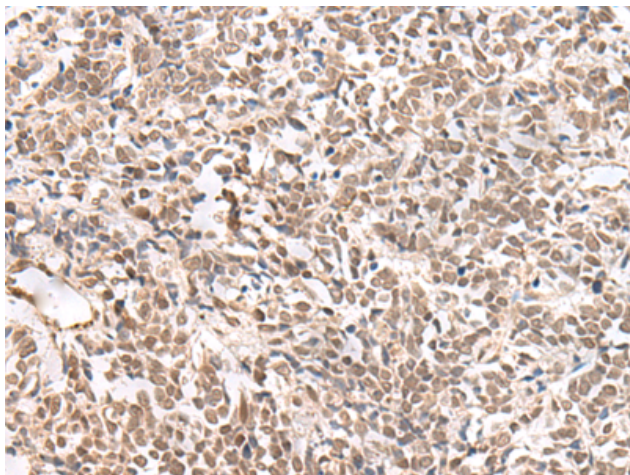
Purification: Antigen affinity purification

Species Reactivity: Human

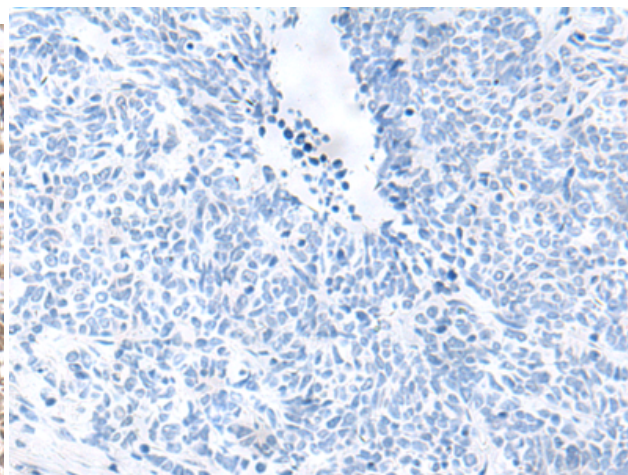
Constituents: PBS (without Mg²⁺ and Ca²⁺), pH 7.4, 150 mM NaCl, 0.05% Sodium Azide and 40% glycerol

Research Areas: Epigenetics and Nuclear Signaling

Storage & Shipping: Store at -20°C. Avoid repeated freezing and thawing



Immunohistochemistry analysis of paraffin embedded Human lung cancer tissue using 221991(ZNF560 Antibody) at a dilution of 1/35(Nucleus).



In comparison with the IHC on the left, the same paraffin-embedded Human lung cancer tissue is first treated with the synthetic peptide and then with 221991(Anti-ZNF560 Antibody) at dilution 1/35.