

ZNF35 RABBIT PAB

Cat.#: S221516

Product Name: Anti-ZNF35 Rabbit Polyclonal Antibody

Synonyms: HF10; HF.10; Zfp105

UNIPROT ID: P13682 (Gene Accession - NP_003411)

Background: May be involved in transcriptional regulation. Involved in cell differentiation and/or proliferation.

Immunogen: Synthetic peptide of human ZNF35

Applications: ELISA, IHC

Recommended Dilutions: IHC: 50-100; ELISA: 5000-10000

Host Species: Rabbit

Clonality: Rabbit Polyclonal

Isotype: Immunogen-specific rabbit IgG

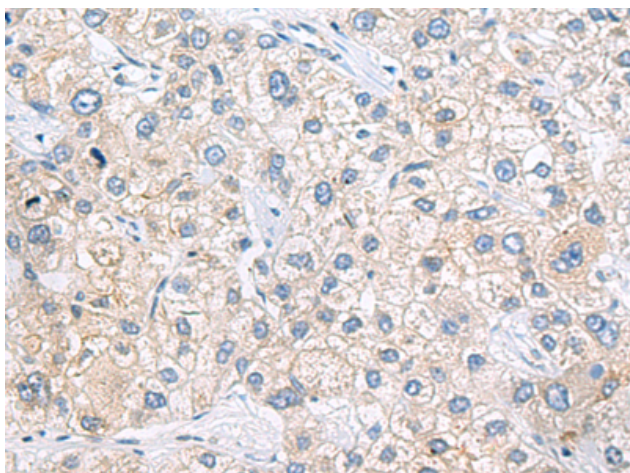
Purification: Antigen affinity purification

Species Reactivity: Human

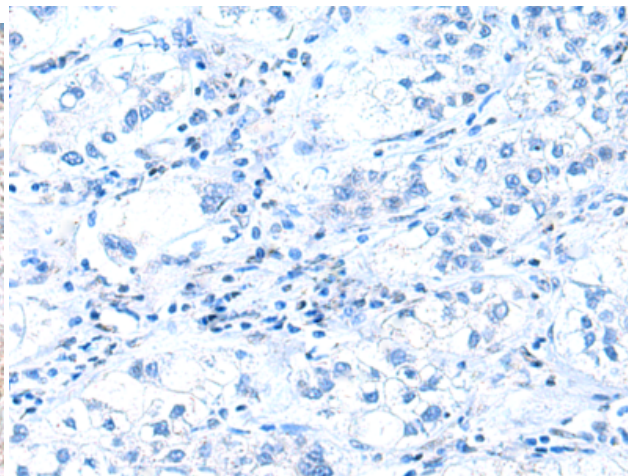
Constituents: PBS (without Mg²⁺ and Ca²⁺), pH 7.4, 150 mM NaCl, 0.05% Sodium Azide and 40% glycerol

Research Areas: Epigenetics and Nuclear Signaling

Storage & Shipping: Store at -20°C. Avoid repeated freezing and thawing



Immunohistochemistry analysis of paraffin embedded Human liver cancer tissue using 221516 (ZNF35 Antibody) at a dilution of 1/40 (Cytoplasm).



In comparison with the IHC on the left, the same paraffin-embedded Human liver cancer tissue is first treated with the synthetic peptide and then with 221516 (Anti-ZNF35 Antibody) at dilution 1/40.