

ZNF302 RABBIT PAB

Cat.#: S218244

Product Name: Anti-ZNF302 Rabbit Polyclonal Antibody

Synonyms: HSD16; MST154; ZNF327; MSTP154; ZNF135L; ZNF140L

UNIPROT ID: Q9NR11 (Gene Accession - BC024176)

Background: This gene encodes a member of the zinc-finger protein family. The encoded protein contains seven C2H2-type zinc fingers and a KRAB domain, but its function has yet to be determined. Alternatively spliced transcript variants have been described.

Immunogen: Fusion protein of human ZNF302

Applications: ELISA, IHC

Recommended Dilutions: IHC: 25-100; ELISA: 5000-10000

Host Species: Rabbit

Clonality: Rabbit Polyclonal

Isotype: Immunogen-specific rabbit IgG

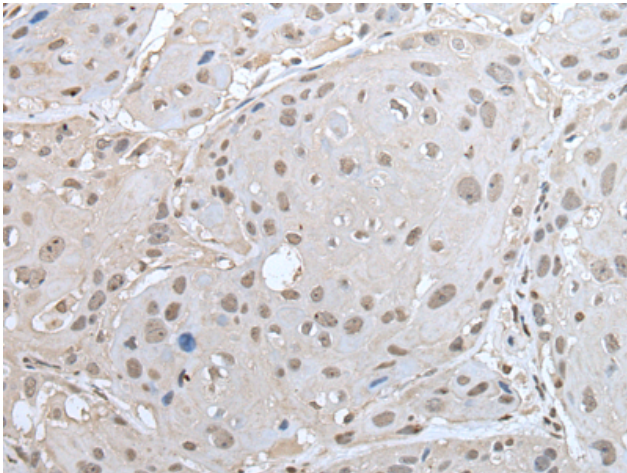
Purification: Antigen affinity purification

Species Reactivity: Human

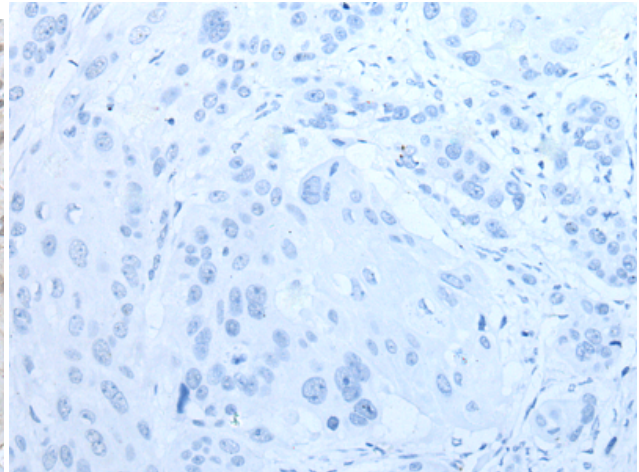
Constituents: PBS (without Mg²⁺ and Ca²⁺), pH 7.4, 150 mM NaCl, 0.05% Sodium Azide and 40% glycerol

Research Areas: Epigenetics and Nuclear Signaling

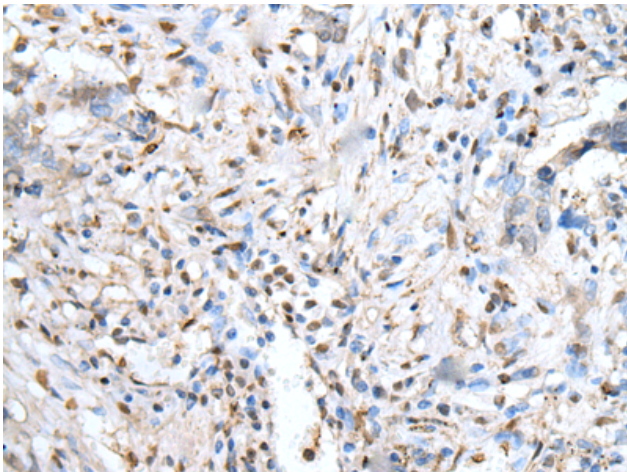
Storage & Shipping: Store at -20°C. Avoid repeated freezing and thawing



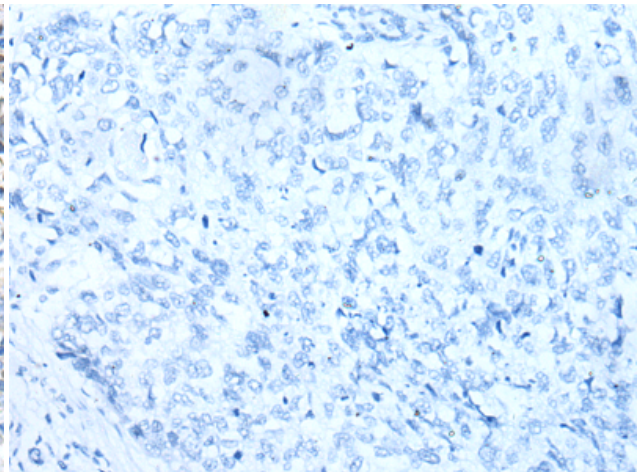
Immunohistochemistry analysis of paraffin embedded Human esophagus cancer tissue using 218244(ZNF302 Antibody) at a dilution of 1/30(Nucleus).



In comparison with the IHC on the left, the same paraffin-embedded Human esophagus cancer tissue is first treated with the fusion protein and then with 218244(Anti-ZNF302 Antibody) at dilution 1/30.



The image on the left is immunohistochemistry of paraffin-embedded Human lung cancer tissue using 218244(Anti-ZNF302 Antibody) at a dilution of 1/30.



In comparison with the IHC on the left, the same paraffin-embedded Human lung cancer tissue is first treated with fusion protein and then with D224018(Anti-ZNF302 Antibody) at dilution 1/30.