

ZNF274 RABBIT PAB

Cat.#: S218242

Product Name: Anti-ZNF274 Rabbit Polyclonal Antibody

Synonyms: ZF2; HFB101; ZSCAN51; ZKSCAN19

UNIPROT ID: Q96GC6 (Gene Accession - BC009763)

Background: This gene encodes a zinc finger protein containing five C2H2-type zinc finger domains, one or two Kruppel-associated box A (KRAB A) domains, and a leucine-rich domain. The encoded protein has been suggested to be a transcriptional repressor. It localizes predominantly to the nucleolus. Alternatively spliced transcript variants encoding different isoforms exist. These variants utilize alternative polyadenylation signals. [provided by RefSeq, Jul 2008]

Immunogen: Fusion protein of human ZNF274

Applications: ELISA, IHC

Recommended Dilutions: IHC: 50–200; ELISA: 5000–10000

Host Species: Rabbit

Clonality: Rabbit Polyclonal

Isotype: Immunogen-specific rabbit IgG

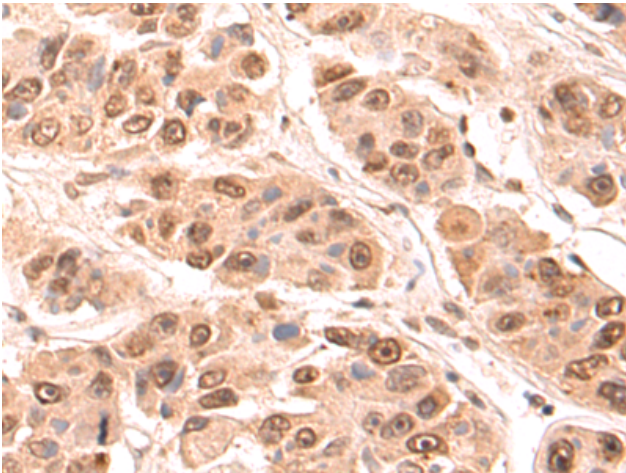
Purification: Antigen affinity purification

Species Reactivity: Human

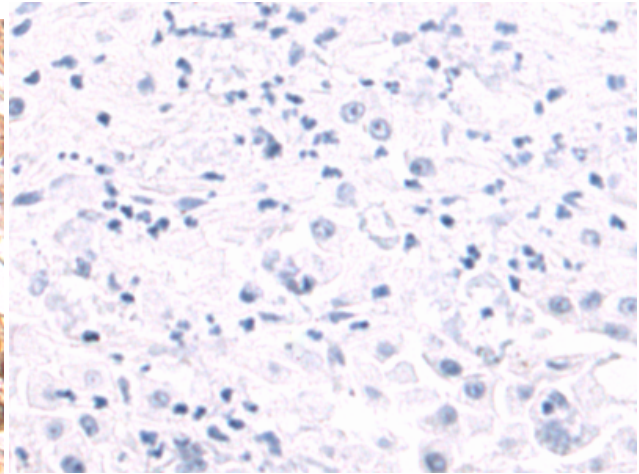
Constituents: PBS (without Mg²⁺ and Ca²⁺), pH 7.4, 150 mM NaCl, 0.05% Sodium Azide and 40% glycerol

Research Areas: Epigenetics and Nuclear Signaling

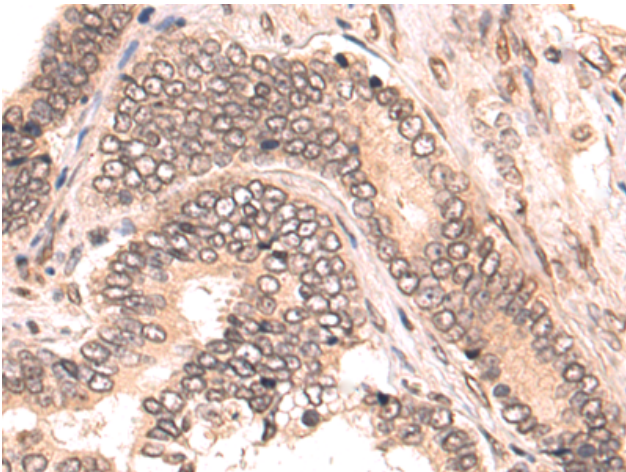
Storage & Shipping: Store at -20°C. Avoid repeated freezing and thawing



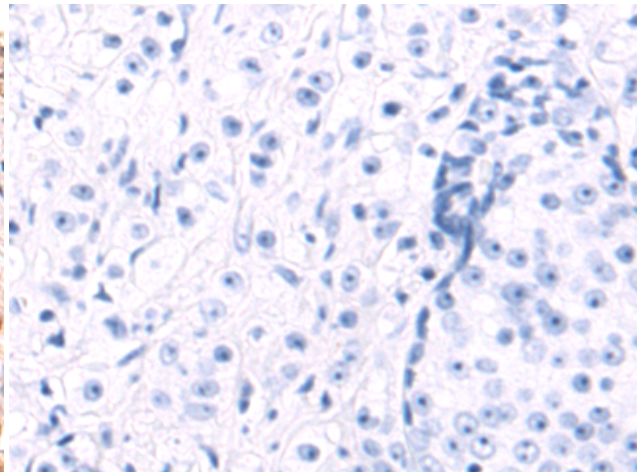
Immunohistochemistry analysis of paraffin embedded Human liver cancer tissue using 218242(ZNF274 Antibody) at a dilution of 1/80(Cytoplasm and Nucleus).



In comparison with the IHC on the left, the same paraffin-embedded Human liver cancer tissue is first treated with the fusion protein and then with 218242(Anti-ZNF274 Antibody) at dilution 1/80.



The image on the left is immunohistochemistry of paraffin-embedded Human prostate cancer tissue using 218242(Anti-ZNF274 Antibody) at a dilution of 1/80.



In comparison with the IHC on the left, the same paraffin-embedded Human prostate cancer tissue is first treated with fusion protein and then with D224015(Anti-ZNF274 Antibody) at dilution 1/80.