

## ZNF266 RABBIT PAB

**Cat.#:** S218241

**Product Name:** Anti-ZNF266 Rabbit Polyclonal Antibody

**Synonyms:** HZFI

**UNIPROT ID:** Q14584 (Gene Accession - BC017407 )

**Background:** This gene encodes a protein containing many tandem zinc-finger motifs. Zinc fingers are protein or nucleic acid-binding domains, and may be involved in a variety of functions, including regulation of transcription. This gene is located in a cluster of similar genes encoding zinc finger proteins on chromosome 19. Alternative splicing results in multiple transcript variants for this gene.

**Immunogen:** Fusion protein of human ZNF266

**Applications:** ELISA, IHC

**Recommended Dilutions:** IHC: 50-200; ELISA: 5000-10000

**Host Species:** Rabbit

**Clonality:** Rabbit Polyclonal

**Isotype:** Immunogen-specific rabbit IgG

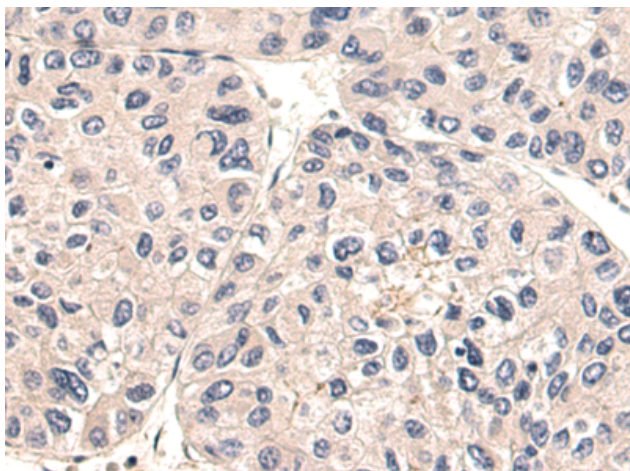
**Purification:** Antigen affinity purification

**Species Reactivity:** Human

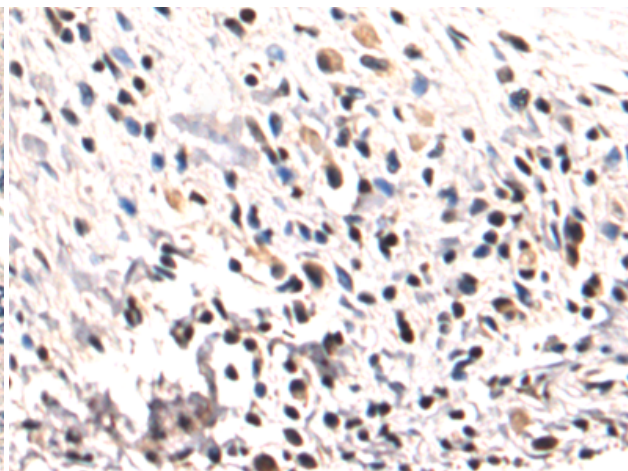
**Constituents:** PBS (without Mg<sup>2+</sup> and Ca<sup>2+</sup>), pH 7.4, 150 mM NaCl, 0.05% Sodium Azide and 40% glycerol

**Research Areas:** Epigenetics and Nuclear Signaling

**Storage & Shipping:** Store at -20°C. Avoid repeated freezing and thawing



Immunohistochemistry analysis of paraffin-embedded Human liver cancer tissue using 218241(ZNF266 Antibody) at a dilution of 1/80(Cytoplasm or Nucleus).



Immunohistochemistry analysis of paraffin-embedded Human esophagus cancer tissue using 218241(Anti-ZNF266 Antibody) at a dilution of 1/80.